



CUSTODY DIVISION QUARTERLY REPORT

October - December 2017

Los Angeles County Sheriff's Department

Jim McDonnell, Sheriff

TABLE OF CONTENTS

Executive Summary.....	3
1. Population Trends.....	5
LA County Inmate Population Graphs	
Population Overview	
Yearly ADIP Trend	
Arrests, Bookings and Releases	
Release Practices	
Homeless and Veteran	
AB109 Split and Non-Split Sentences	
2. Facilities Overview.....	13
Rated Capacities - Board of State and Community Corrections	
Jail Housing Facilities	
Men's Central Jail	
Twin Towers Correctional Facility	
Century Regional Detention Center	
Pitchess Detention Center – East	
Pitchess Detention Center – North	
Pitchess Detention Center – South	
North County Correctional Facility	
3. Population Overview.....	20
Inmate Population Demographics	
Inmate Population Offender Age Groups	
Classification and Re-Classification	
Re-classification Statistics	
Inmate Population Breakdown	
Crime Classification Statistics	
Inmates with M7	
Pre-Trial Population	
Pre-Trial Misdemeanor Population	
Pre-Trial Bail Holds	
Mental Health Inmate Population	
Misdemeanor Incompetent to Stand Trial (MIST)	
Americans with Disabilities Act (ADA)	
Medical Housing	
4. In-Custody Programs.....	34
Credit Earnings	
Conservation Work Program (CWP)	
Fire Camp Training Program	
CDCR Fire Camp Program	
Education Based Incarceration Program (EBI)	
Back on Track (BOT)	
In-Custody S.T.A.R.T Program	
Program Credit Earning Chart	

5. Alternatives to Custody Programs.....39
 Community Transition Unit (CTU)
 Substance Abuse Treatment and Reentry Transition (S.T.A.R.T)
 Tarzana Treatment Center DMH/SUD Program
 Mental Health Diversion – Normandie Village/Gateway
 Community Based Alternatives to Custody (CBAC)

6. Re-Entry Assistance.....43
 Affordable Care Act (ACA)
 Community Re-Entry and Resource Center (CRRC)
 CTU Coordinated Releases to Various Programs
 CTU Vital Records

EXECUTIVE SUMMARY

The Los Angeles County Sheriff's Department (LASD) is committed to maintaining a secure and constitutional jail system. As part of this effort, a periodic report is essential to better understand and quantify population trends. This ***Custody Division Quarterly Report*** reports data collected during the Fourth Quarter of 2017, and is produced by the Population Management Bureau (PMB) Analysis Unit.

The average daily inmate population (ADIP) during the fourth quarter of 2017 was 17,408. This number includes approximately 323 inmates participating in community-based alternatives to custody programs. This is slightly less than the third quarter of 2017 ADIP average of 17,678, including approximately 374 who participated in the community-based alternative to custody programs (ATC). During the fourth quarter of 2016, the ADIP was 16,942, including 534 inmates participating in community-based alternatives to custody programs.

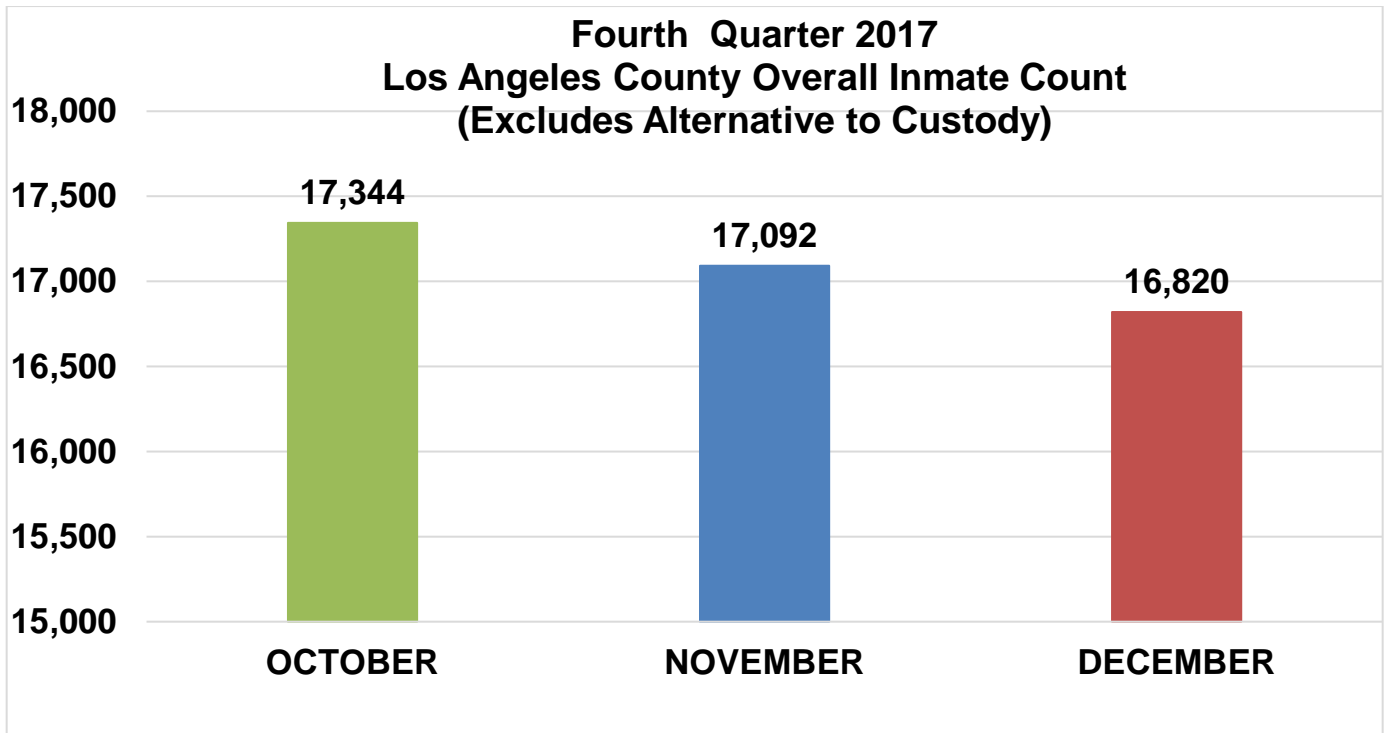
As discussed in our third quarter report, on July 1, 2017, the funding source for County funded residential substance abuse treatment programs was changed to Medi-Cal. Previously, our ATC program was paid for through a different funding source. Medi-Cal funding only covers up to 90 days of residential treatment and is restricted to Medi-Cal eligible participants who have a proven "medical necessity" for residential treatment via the American Society of Addiction Medicine (ASAM) assessment. These changes have made it even more challenging to find qualified inmates who meet both the existing criteria LASD and the new Medi-Cal requirements for ATC programs and is one reason that our ATC ADIP is nearly 200 participants lower than it was in the same quarter 2016. An additional reason for the low ATC ADIP is the continued use of percentage release (discussed below). Inmates who in the past would have been good candidates for ATC programs such as Work Release, are now immediately released "time served" and therefore do not participate in programming. For additional information regarding ATC programs see page 41 of this report.

Over-crowding has necessitated the continued use of percentage release during this reporting period. Inmates serving traditional county sentences completed 10 percent of their court ordered sentence. Inmates who were serving sentences for designated serious and/or violent offences (M7 charges) and those sentenced under 1170 PC continued to serve 100 percent of their sentences, minus any time credits earned. The release percentage for the same time period in 2016 was 30 percent for both males and females. This quarter inmates who received short sentences of 180 days or less were immediately processed for release and served no additional jail time. In 2016, only those sentenced to 120 days or less were considered "shorts." For further information regarding this quarter's percentage release criteria see page 10 of this report.

In early 2017, LASD began compiling reports on the number of inmates who identified themselves as being homeless and/or veterans of the United States military and publishing these statistics in our Quarterly Reports. In December 2017, PMB discovered a software reporting error that had resulted in the under reporting of homeless inmates housed in the jail system. The error has been rectified and the Quarterly Reports for 2017 have been amended to reflect the corrected counts. During this quarter, on average there were 2,150 inmates who answered “yes” to the question “Are you homeless?” in the jail system at any given time. For further information see page 11 of this report.

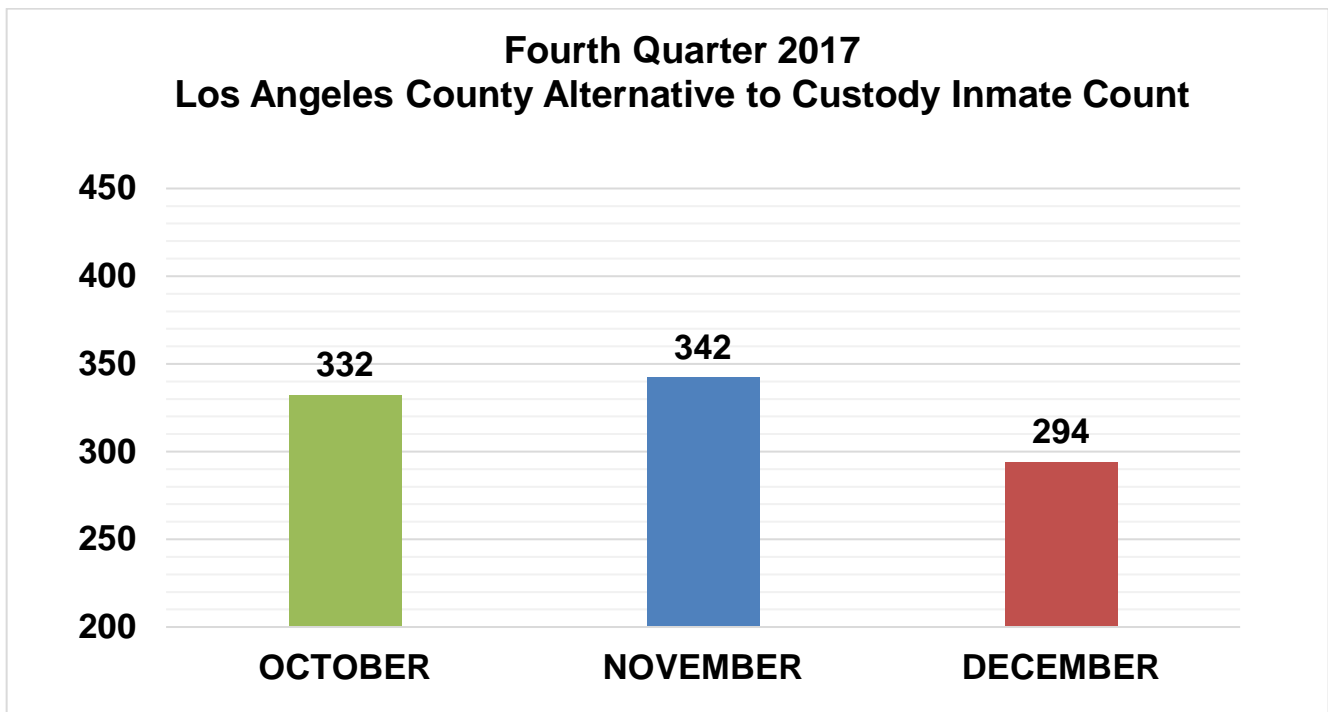
POPULATION TRENDS

LA COUNTY INMATE POPULATION



2017 Quarterly Overall Division ADIP
17,085

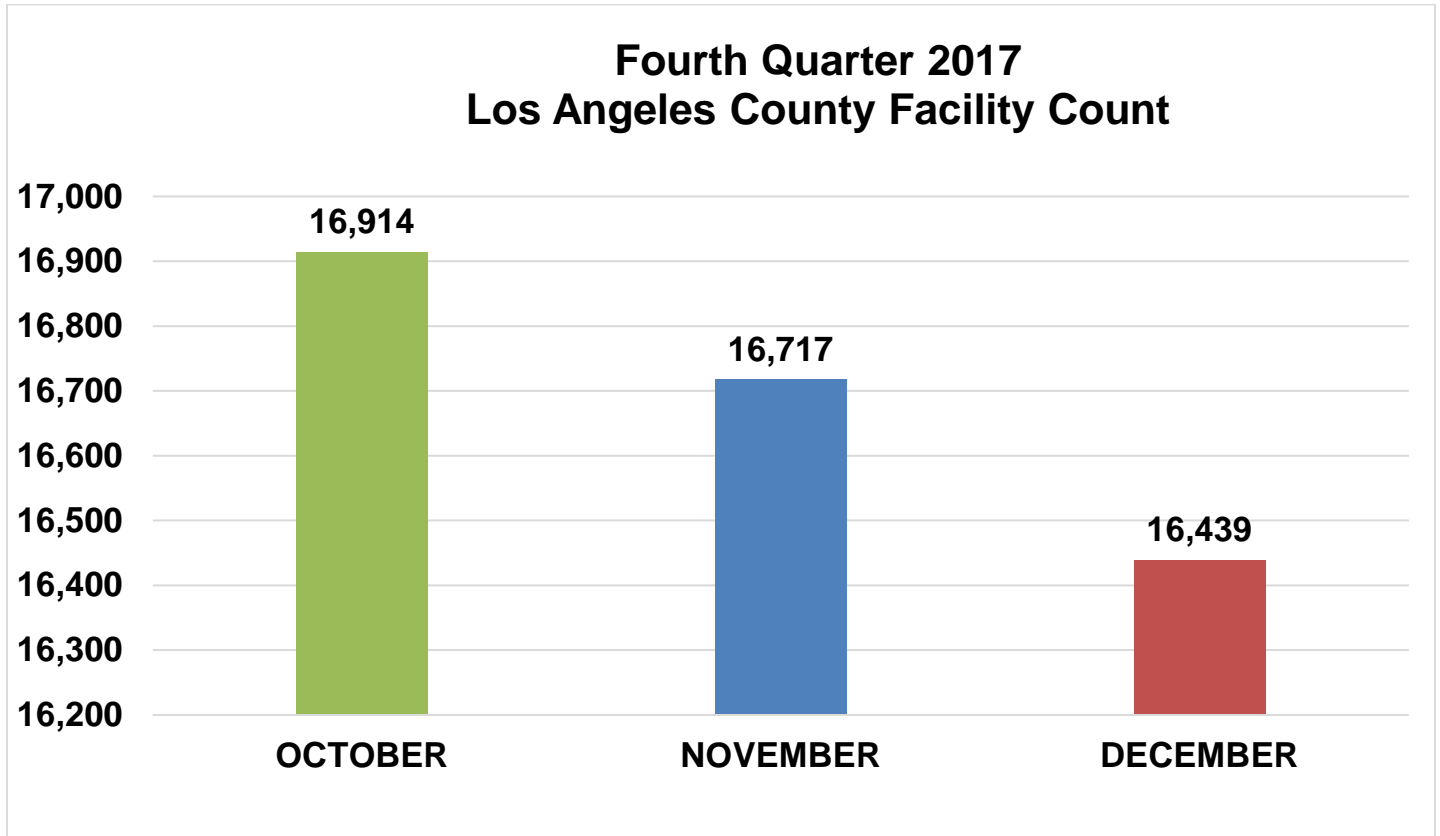
Quarterly Division ADIP will differ from Quarterly Facility ADIP due to the inclusion of Inmates processing into IRC.



2017 Quarterly ATC ADIP
323

POPULATION OVERVIEW

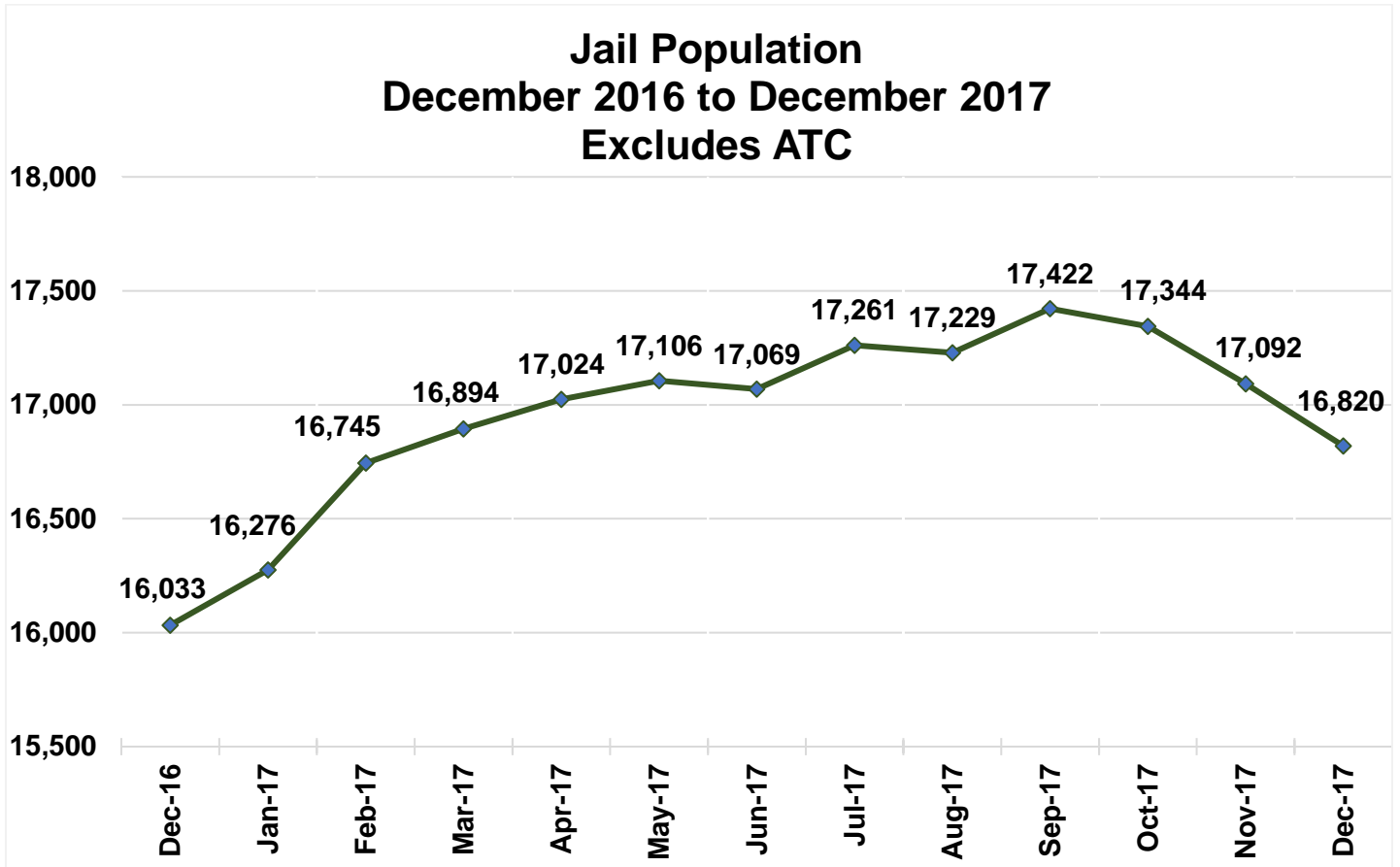
The inmate population within the County jail system had a slight decrease for this fourth quarter of 2017.



2017 Quarterly Custody Facility ADIP
16,690

Facility Jail Count reflects all inmates housed in a LA County jail bed for the quarter. Excludes ATC and IRC.

Yearly ADIP Trend



Seven Year ADIP Comparison		
Year	ADIP	Notes
2011	15,014	(Oct - AB109 enacted)
2012	18,043	
2013	18,687	
2014	18,680	(Nov - Prop 47)
2015	17,049	
2016	16,613	
2017	17,024	

FOURTH QUARTER 2017 - ARREST AND BOOKING STATS

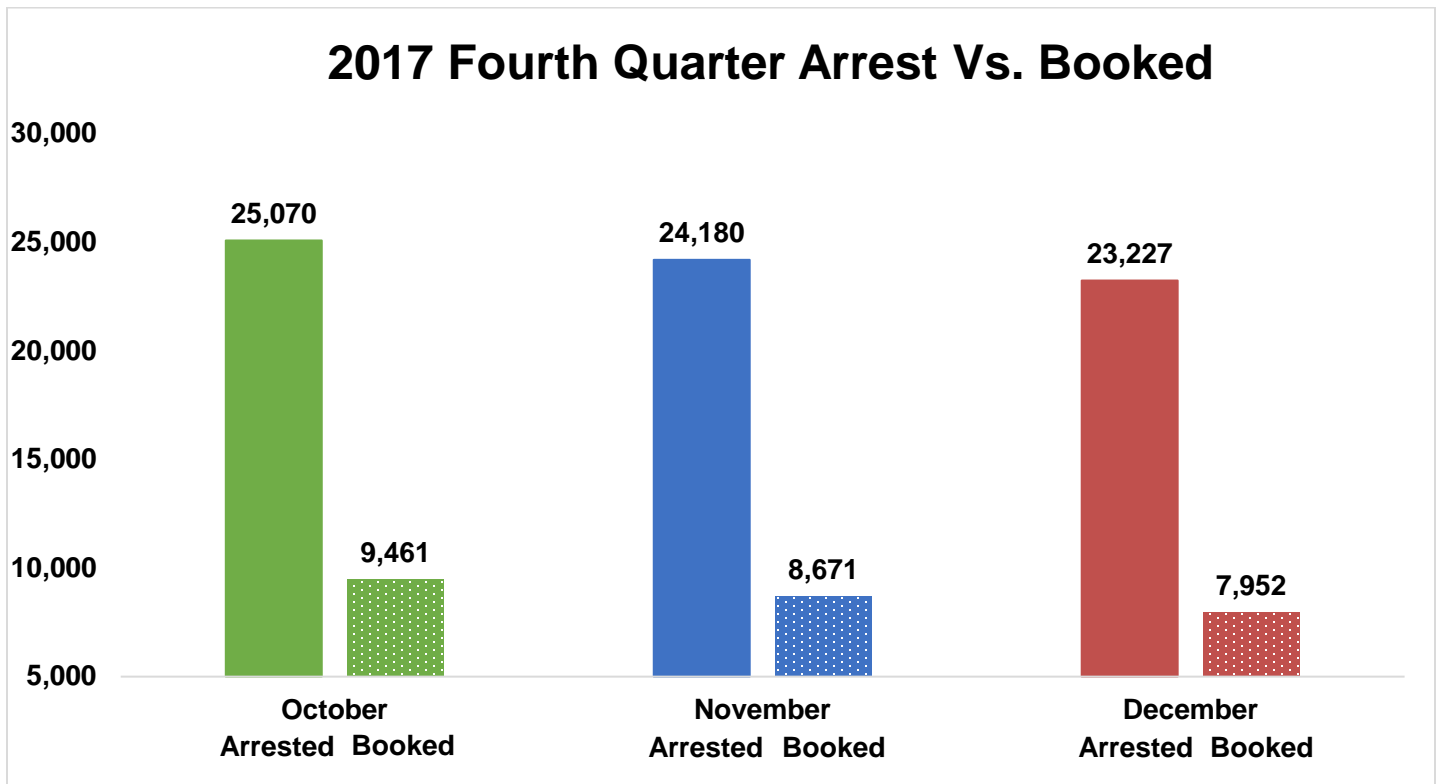
Arrest activity decreased by 9% over last quarter. The number of inmates booked into the LA County jail this quarter was decreased by 11% over last quarter's number of inmates booked into custody (29,365).

	October		November		December		Quarterly Total	Quarterly Average	Quarterly %
	Monthly Total	%	Monthly Total	%	Monthly Total	%			
Felony	9,139	36%	8,860	37%	8,324	36%	26,323	8,774	36%
Misdemeanor	14,814	59%	14,332	59%	13,948	60%	43,094	14,365	60%
Juvenile - non criminal	55	0%	64	0%	43	0%	162	54	0%
Other	1,062	4%	924	4%	912	4%	2,898	966	4%
Total Arrested	25,070		24,180		23,227		72,477	24,159	
Total Booked into LA County	9,461	38%	8,671	36%	7,952	34%	26,084	8,695	36%

Previously, data was generated from the Custody Inmate Portal (CIP) to determine how many inmates were booked and arrested, which only used the first charge (excluding all other charges) to determine the charge level. Beginning this year, we query and categorize all charges by the highest charge level to provide more accurate data.

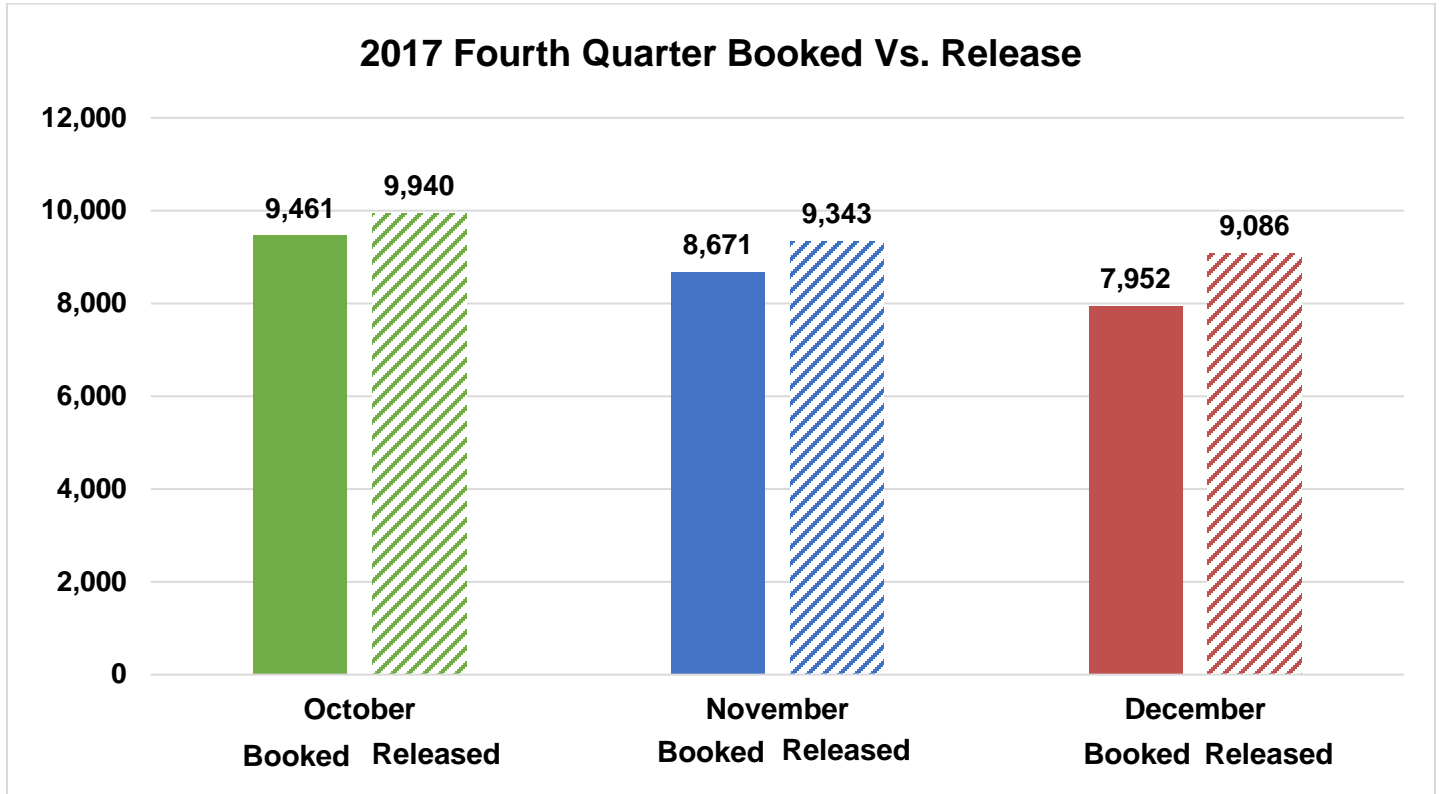
FOURTH QUARTER 2017 - ARRESTS VS. BOOKINGS

The graph below compares the average Arrests and Bookings for this quarter.



FOURTH QUARTER 2017 – BOOKINGS VS. RELEASES

LASD averaged approximately 9,456 releases this quarter. This is a decrease of approximately 757 releases compared to last quarter (average of 10,213).



LA COUNTY JAIL RELEASE PRACTICES

Due to conditions of overcrowding, during this quarter traditional county sentenced inmates were subject to early release under the following conditions.

Month	Release Criteria Male	Release Criteria Female	*M7 Release Criteria	**Short Sentence Male	**Short Sentence Female
October	10%	10%	100%	180 days	180 days
November	10%	10%	100%	180 days	180 days
December	10%	10%	100%	180 days	180 days

*M7 are inmates who have designated serious and/or violent offences are classified as M7, which requires their record jacket go through extra 'security' checks upon release from Sheriff's custody.

**Shorts are inmates who are sentenced to a term in county jail, which after all legal credits are awarded and the current jail percentage time is considered, are immediately released from Sheriff's custody after processing from court.

HOMELESS AND VETERAN

Homeless Population

The chart below provides an average breakdown of the inmate population who stated they were homeless by gender, major race and age category.

	October	November	December	TOTAL	AVERAGE
Male	2,043	1,842	1,652	5,537	1,846
Female	272	337	304	913	304
Total	2,315	2,179	1,956	6,450	2,150

	October	November	December	TOTAL	AVERAGE
Hispanic	1,044	972	902	2,918	973
Black	657	636	533	1,826	608
White	534	507	455	1,496	499
Other	80	64	66	210	70
Total	2,315	2,179	1,956	6,450	2,150

	October	November	December	TOTAL	AVERAGE
18 to 25	425	371	278	1,074	358
26 to 34	779	713	662	2,154	718
35 to 39	296	324	298	918	306
40 to 44	223	224	198	645	215
45 & Older	592	547	520	1,659	553
Total	2,315	2,179	1,956	6,450	2,150

**In December 2017, PMB discovered a software reporting error that had resulted in the under reporting of homeless inmates housed in the jail system. The error has been rectified and the counts for 2017 have been amended.*

Veteran Population

The chart below provides an average breakdown of the inmate population who stated they have served in the United State Military by gender, major race and age category.*

	October	November	December	TOTAL	AVERAGE
Male	202	199	207	608	203
Female	1	1	1	3	1
Total	203	200	208	611	204

	October	November	December	TOTAL	AVERAGE
Hispanic	54	58	57	169	56
Black	74	70	79	223	75
White	63	62	65	190	63
Other	12	11	8	31	10
Total	203	200	208	611	204

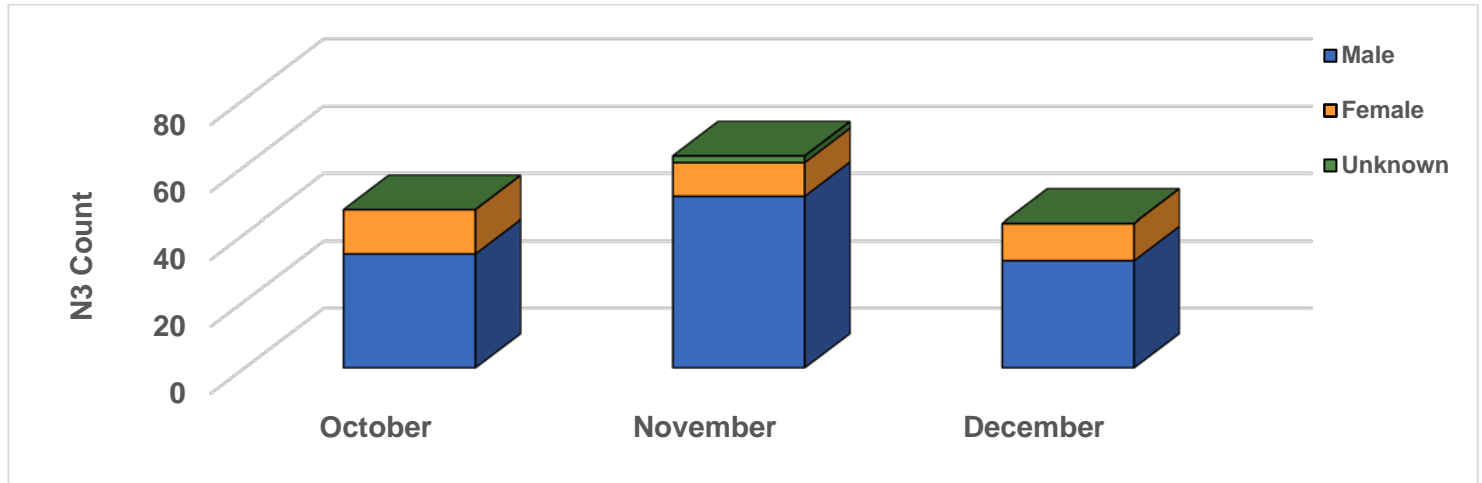
	October	November	December	TOTAL	AVERAGE
18 to 25	11	8	9	28	9
26 to 34	40	43	39	122	41
35 to 39	29	31	30	90	30
40 to 44	13	15	17	45	15
45 & Older	111	104	113	328	109
Total	203	200	208	611	204

**These are numbers based upon self-identification and have not been confirmed by the Veterans Administration.*

AB109 Split and Non Split Sentence

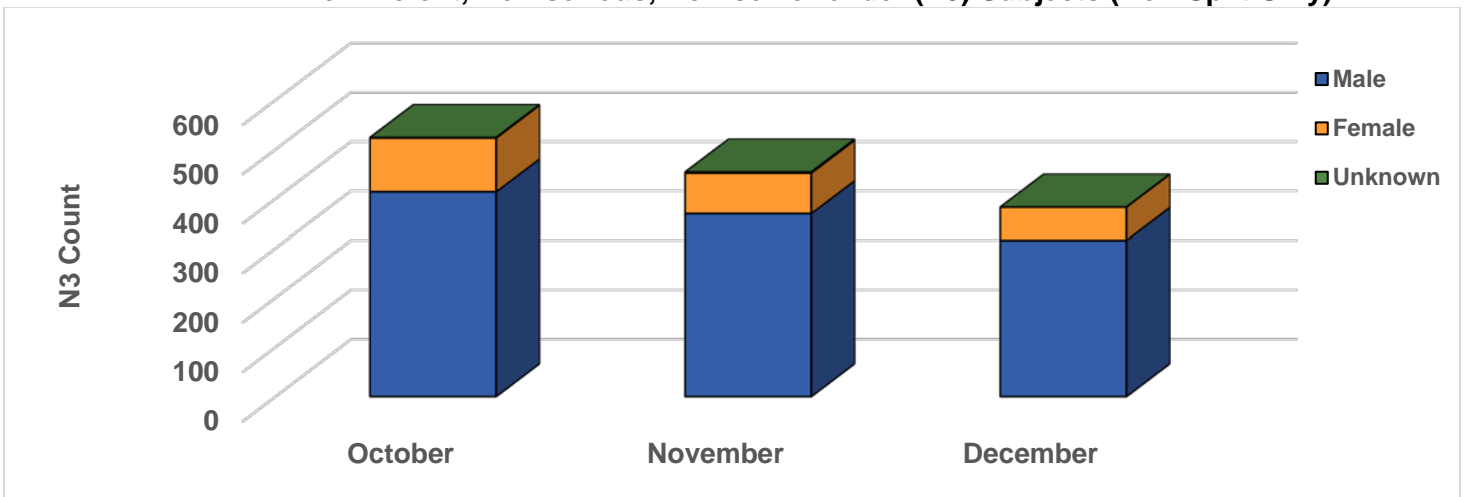
Under AB109, judges can impose a “split sentence” when sentencing a convicted defendant to time in jail. A split sentence requires a portion of the sentence served in custody, and a portion of the sentence served under supervision of the probation department in the community. The Split Sentence option in sentencing results in a shorter stay for inmates.

**Non-violent, Non-serious, Non-sex offender (N3) Subjects (Split Only)
October 2017 to December 2017**



	October	November	December	Average
Male	34	51	32	39
Female	13	10	11	11
Unknown	0	2	0	1
Summary	47	63	43	51

Non-violent, Non-serious, Non-sex offender (N3) Subjects (Non-Split Only)



	October	November	December	Average
Male	414	370	316	367
Female	109	82	67	86
Unknown	1	2	0	1
Summary	524	454	383	454

*Data queried by Probation from ISAB-JAIMS system.

FACILITIES OVERVIEW

RATED CAPACITY

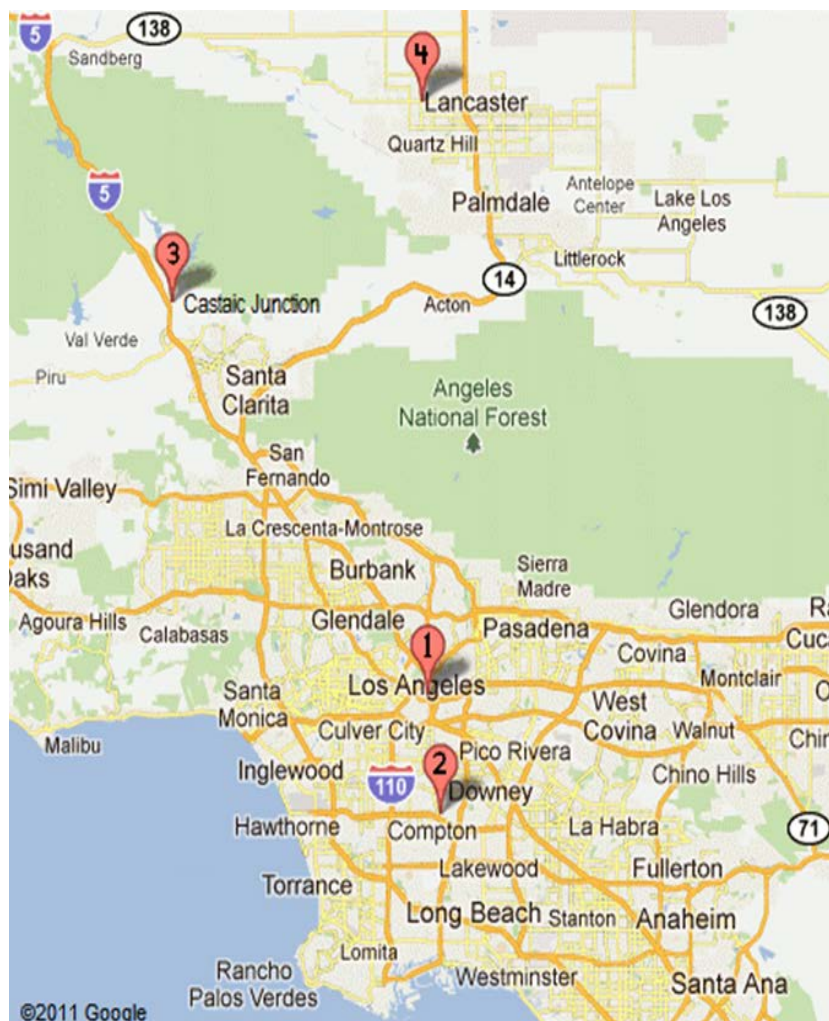
The Board of State and Community Corrections (BSCC) is a government body which recommends capacity limits for county jails. BSCC conducts biennial jail inspections; LASD was rated in April 2016.

Board of State and Community Corrections				
LASD Custody Facilities	BSCC Rated Capacity	Quarterly Facility ADIP	Above BSCC Rated Capacity	% BSCC Capacity
Men's Central Jail	3,529	4,261	732	121%
Twin Towers Correctional Facility	2,484	3,528	1,044	142%
Century Regional Detention Facility	1,708	2,120	412	124%
Pitchess Detention Center – East	926	71	-855	8%
Pitchess Detention Center – North	832	1,443	611	173%
Pitchess Detention Center – South	844	1,325	481	157%
North County Correctional Facility	2,214	3,941	1,727	178%

Total BSCC Rated Capacity*	Quarterly Facility ADIP	Total Above BSCC Rated Capacity	Total % BSCC Capacity	Total % BSCC Capacity Excluding East Facility
12,537	16,690	4,153	133%	143%

*Statistical data gathered from *Board of State and Community Corrections Inspection Report 11/2016*.

**The facility ADIP does not include the IRC and ATC populations.



LA County Jail Facilities

1

- Men's Central Jail (MCJ)
- Twin Towers Correctional Facility (TTCF)
- Los Angeles County Medical Center (LCMC)
- Correctional Treatment Center (CTC)
- Inmate Reception Center (IRC)

2

- Century Regional Detention Facility (CRDF)

3

- Pitchess Detention Center (PDC)
- PDC East Facility
- PDC North Facility
- PDC South Facility
- North County Correctional Facility (NCCF)

4

- Mira Loma Detention Center (MLDC)

JAIL HOUSING FACILITIES

MEN'S CENTRAL JAIL TOTAL INMATE POPULATION					
SECURITY LEVEL	OCTOBER	NOVEMBER	DECEMBER	QUARTERLY AVERAGE	% OF POPULATION
Security Level Low 1-4	1,050	1,001	928	993	23%
Security Level Medium 5-7	2,434	2,454	2,486	2,458	58%
Security Level Low High 8-9	787	827	814	809	19%
FACILITY TOTAL	4,271	4,282	4,228	4,260	100%
°SUB POPULATION HOUSED THROUGHOUT FACILITY					
HOUSING TYPE	OCTOBER	NOVEMBER	DECEMBER	QUARTERLY AVERAGE	
*Administratively Segregated Inmates (K-10)	295	301	279	292	
> Administratively Segregated Inmates (K-1)	13	11	11	12	
**Discipline	38	41	34	38	
General Population on Psychotropic Meds	731	690	690	704	
Inmate Workers	959	962	928	950	
LGBT (K-6 G) Inmates	364	377	373	371	
Medical/Clinic	366	352	345	354	
^Other (K-6T/B/C)	155	148	150	151	
Pro-Per	84	85	86	85	
School Housing (EBI)	440	428	438	435	
Sexually Violent Predators	11	10	9	10	
Sex Crimes Against Children (K-6 Y) Inmates	257	253	242	251	

°Sub population housed throughout facility includes those who are classified with special housing needs and are included in the total inmate population. An inmate may belong to more than one subpopulation.

*K-10-Administratively segregated for various reasons including danger to self or others.

>K-1 Law Enforcement related in custody.

^ K-6T Contempt of court, K6B threatened by others, K-6C protective custody.

**Majority of discipline inmates are now housed at TTCF.

**TWIN TOWERS CORRECTIONAL FACILITY
TOTAL INMATE POPULATION**

SECURITY LEVEL	OCTOBER	NOVEMBER	DECEMBER	QUARTERLY AVERAGE	% OF POPULATION
SECURITY LEVEL LOW 1-4	739	723	726	729	21%
SECURITY LEVEL MEDIUM 5-7	2,265	2,280	2,284	2,276	64%
SECURITY LEVEL HIGH 8-9	509	536	503	516	15%
FACILITY TOTAL	3,513	3,539	3,513	3,521	100%

°SUB POPULATION HOUSED THROUGHOUT FACILITY

HOUSING TYPE	OCTOBER	NOVEMBER	DECEMBER	QUARTERLY AVERAGE
ADMINISTRATIVELY SEGREGATED (K-10)	139	141	143	141
ADMINISTRATIVELY SEGREGATED INMATES (K-1)	2	3	4	3
ADMINISTRATIVELY SEGREGATED INMATES (K-6B)	50	50	52	51
AMERICAN'S WITH DISABILITIES (ADA)	354	351	342	349
DEVELOPMENTALLY DISABLED	27	27	25	26
DISCIPLINE	75	61	57	64
FEMALE GENERAL POPULATION	175	167	169	170
FEMALE MEDICAL (CTC)	20	18	19	19
FEMALE SCHOOL HOUSING (EBI)	103	99	100	101
FEMALE WORKERS	49	46	48	48
GENERAL POPULATION ON PSYCHOTROPIC MEDS SECURITY LEVEL 1-4	43	39	44	42
GENERAL POPULATION ON PSYCHOTROPIC MEDS SECURITY LEVEL 5-7	199	203	186	196
GENERAL POPULATION ON PSYCHOTROPIC MEDS SECURITY LEVEL 8-9	60	61	61	61
INMATE WORKERS	0	0	0	0
LGBT (K-6 G) INMATES	96	89	83	89
MALE SCHOOL HOUSING (EBI)	407	461	476	448
MEDICAL (CTC)	105	110	113	109
MENTALLY ILL - HIGH OBSERVATION HOUSING (HOH)	849	886	931	889
MENTALLY ILL - (MOH)/ SERVICE AREA	2,232	2,310	2,394	2,312
MENTALLY ILL - MODERATE OBSERVATION HOUSING (MOH) SCHOOL HOUSING (EBI)	407	461	476	448
MENTALLY ILL - MODERATE OBSERVATION HOUSING (MOH) SEX CRIMES AGAINST CHILDREN (K-6 Y) INMATES	136	135	139	137

°Sub population housed throughout facility includes those who are classified with special housing needs and are included in the total inmate population.

An inmate may belong to more than one subpopulation.

***K-10-Administratively segregated for various reasons including danger to self or others.**

****K-6B-Administratively segregated are at risk of assault in GP housing.**

^Related to Law Enforcement-segregated from general population for safety reasons.

***** Inmate workers moved to MCJ because of ADA construction project in T271.**

****** ADA extended program therefore more participants beginning October, 2017.**

******* EBI extended MOH program therefore more participants beginning October, 2017.**

**CENTURY REGIONAL DETENTION CENTER
TOTAL INMATE POPULATION**

SECURITY LEVEL	OCTOBER	NOVEMBER	DECEMBER	QUARTERLY AVERAGE	% OF POPULATION
SECURITY LEVEL LOW 1-4	687	691	661	680	32%
SECURITY LEVEL MEDIUM 5-7	1,182	1,160	1,153	1,165	55%
SECURITY LEVEL HIGH 8-9	278	275	270	274	13%
FACILITY TOTAL	2,147	2,126	2,084	2,119	100%

°SUB POPULATION HOUSED THROUGHOUT FACILITY

HOUSING TYPE	OCTOBER	NOVEMBER	DECEMBER	QUARTERLY AVERAGE
ADMINISTRATIVE SEGRAGATED INMATES (K-10)	46	51	48	48
DISCIPLINE	25	22	26	24
INMATE WORKERS	338	333	324	332
MEDICAL/CLINIC	4	10	12	9
MENTALLY ILL - HIGH OBSERVATION HOUSING (HOH)	295	311	290	299
MENTALLY ILL - MODERATE OBSERVATION HOUSING (MOH)	292	283	282	286
OTHER (K-6B)	7	10	9	9
SCHOOL HOUSING (EBI)	517	518	515	517
SEX CRIMES AGAINST CHILDREN (K-6 Y) INMATES	7	5	7	6

°Sub population housed throughout facility includes those who are classified with special housing needs and are included in the total inmate population.

An inmate may belong to more than one subpopulation.

^K-10-Administratively segregated for various reasons including danger to self or others.

**PITCHESS DETENTION CENTER – EAST FACILITY
TOTAL INMATE POPULATION**

SECURITY LEVEL	OCTOBER	NOVEMBER	DECEMBER	QUARTERLY AVERAGE	% OF POPULATION
SECURITY LEVEL LOW 1-4	59	55	56	57	80%
SECURITY LEVEL LOW 5-7	14	14	16	15	20%
SECURITY LEVEL LOW 8-9	0	0	0	0	0%
TOTAL FACILITY TOTAL	73	69	72	72	100%

°SUB POPULATION HOUSED THROUGHOUT FACILITY

HOUSING TYPE	OCTOBER	NOVEMBER	DECEMBER	QUARTERLY AVERAGE
FIRE CAMP SECURITY LEVELS 1-4	59	55	56	57
FIRE CAMP SECURITY LEVELS 5-7	14	14	16	15

°Sub population housed throughout facility includes those who are classified with special housing needs and are included in the total inmate population. An inmate may belong to more than one subpopulation.

**PITCHESS DETENTION CENTER – NORTH
TOTAL INMATE POPULATION**

SECURITY LEVEL	OCTOBER	NOVEMBER	DECEMBER	QUARTERLY AVERAGE	% OF POPULATION
SECURITY LEVEL LOW 1-4	274	266	262	267	19%
SECURITY LEVEL MEDIUM 5-7	1,125	1,117	1,134	1,125	78%
SECURITY LEVEL HIGH 8-9	46	51	53	50	3%
FACILITY TOTAL	1,445	1,434	1,449	1,442	100%

°SUB POPULATION HOUSED THROUGHOUT FACILITY

HOUSING TYPE	OCTOBER	NOVEMBER	DECEMBER	QUARTERLY AVERAGE
DISCIPLINE	27	25	28	27
INMATE WORKERS	88	90	91	90
SCHOOL HOUSING GP (EBI) SECURITY LEVELS 1-7	284	279	281	281
SCHOOL HOUSING (EBI) SECURITY LEVELS 1-7 K6Y	95	94	95	95
SEX CRIMES AGAINST CHILDREN INMATES (K-6 Y) SECURITY LEVEL 1-7	283	281	284	283
MENTALLY ILL - MODERATE OBSERVATION HOUSING (MOH)	295	294	303	297

°Sub population housed throughout facility includes those who are classified with special housing needs and are included in the total inmate population.

An inmate may belong to more than one subpopulation.

♦Inmates housed at North Facility for disciplinary reasons.

**PITCHESS DETENTION CENTER - SOUTH
TOTAL INMATE POPULATION**

SECURITY LEVEL	OCTOBER	NOVEMBER	DECEMBER	QUARTERLY AVERAGE	% OF POPULATION
SECURITY LEVEL LOW 1-4	632	629	599	620	47%
SECURITY LEVEL MEDIUM 5-7	716	698	702	705	53%
SECURITY LEVEL HIGH 8-9	0	0	0	0	0%
FACILITY TOTAL	1,348	1,327	1,301	1,325	100%

°SUB POPULATION HOUSED THROUGHOUT FACILITY

HOUSING TYPE	OCTOBER	NOVEMBER	DECEMBER	QUARTERLY AVERAGE
BACK ON TRACK SECURITY LEVEL 1-7	65	59	57	60
SCHOOL HOUSING (EBI) SECURITY LEVEL 1-7	342	271	329	314
INMATE WORKERS SECURITY LEVEL 1-7	506	501	492	500

°Sub population housed throughout facility includes those who are classified with special housing needs and are included in the total inmate population. An inmate may belong to more than one subpopulation.

**NORTH COUNTY CORRECTIONAL FACILITY
TOTAL INMATE POPULATION**

SECURITY LEVEL	OCTOBER	NOVEMBER	DECEMBER	QUARTERLY AVERAGE	% OF POPULATION
SECURITY LEVEL LOW 1-4	701	718	712	710	18%
SECURITY LEVEL MEDIUM 5-7	2,310	2,183	2,125	2,206	56%
SECURITY LEVEL HIGH 8-9	1,092	1,031	948	1,024	26%
FACILITY TOTAL	4,103	3,932	3,785	3,940	100%

°SUB POPULATION HOUSED THROUGHOUT FACILITY

HOUSING TYPE	OCTOBER	NOVEMBER	DECEMBER	QUARTERLY AVERAGE
ADMINISTRATIVELY SEGREGATED INMATES (K-10) SECURITY LEVEL 1-8	2	1	1	1
ADMINISTRATIVELY SEGREGATED INMATES (K-6B) SECURITY LEVEL 1-8	117	110	102	110
DISCIPLINE SECURITY LEVEL 1-7	172	186	172	177
INMATE WORKERS SECURITY LEVEL 1-7	729	759	733	740
MEDICAL/CLINIC SECURITY LEVEL 5-7	8	11	8	9
SCHOOL HOUSING (EBI) SECURITY LEVEL 1-8	173	135	133	147
SCHOOL HOUSING (EBI) VETERAN SECURITY LEVEL 1-8	58	52	54	55

°Sub population housed throughout facility includes those who are classified with special housing needs and are included in the total inmate population.

An inmate may belong to more than one subpopulation.

**K-10-Administratively segregated for various reasons including danger to self or others.*

POPULATION OVERVIEW

INMATE POPULATION DEMOGRAPHICS

Racial demographics this quarter indicate the three most populous racial groups within the LA County Jail for both male and female offenders are Hispanic (51%), Black (30%), and White (15%).

COMBINED	October 2017		November 2017		December 2017		Quarterly Average	Quarterly %
	Race	Population	%	Population	%	Population		
Hispanic	8,849	51%	8,717	51%	8,518	51%	8,695	51%
Black	5,130	30%	5,068	30%	5,041	30%	5,080	30%
White	2,670	15%	2,632	15%	2,572	15%	2,625	15%
All Others	593	3%	610	4%	611	4%	605	4%
Chinese	28	0%	29	0%	31	0%	29	0%
Filipino	29	0%	25	0%	20	0%	25	0%
Pacific Islanders	14	0%	14	0%	19	0%	16	0%
Japanese	5	0%	3	0%	3	0%	3	0%
American Indian	6	0%	5	0%	4	0%	5	0%
Total	17,324	100%	17,102	100%	16,818	100%	17,082	100%

MALE	October 2017		November 2017		December 2017		Quarterly Average	Quarterly %
	Race	Population	%	Population	%	Population		
Hispanic	7,844	52%	7,721	52%	7,535	52%	7,700	52%
Black	4,409	29%	4,342	29%	4,333	30%	4,361	30%
White	2,159	14%	2,153	15%	2,089	14%	2,134	14%
All Others	495	3%	510	3%	512	4%	505	3%
Chinese	22	0%	24	0%	27	0%	24	0%
Filipino	17	0%	17	0%	14	0%	16	0%
Pacific Islanders	13	0%	12	0%	17	0%	14	0%
Japanese	3	0%	2	0%	3	0%	3	0%
American Indian	6	0%	5	0%	4	0%	5	0%
Total	14,969	100%	14,784	100%	14,532	100%	14,762	100%

FEMALE	October 2017		November 2017		December 2017		Quarterly Average	Quarterly %
	Race	Population	%	Population	%	Population		
Hispanic	1,005	43%	997	43%	983	43%	995	43%
Black	721	31%	727	31%	708	31%	718	31%
White	511	22%	479	21%	483	21%	491	21%
All Others	98	4%	100	4%	99	4%	99	4%
Chinese	6	0%	5	0%	5	0%	5	0%
Filipino	12	1%	8	0%	6	0%	9	0%
Pacific Islanders	1	0%	2	0%	3	0%	2	0%
Japanese	2	0%	0	0%	-	0%	1	0%
American Indian	-	0%	-	0%	0	0%	0	0%
Total	2,355	100%	2,318	100%	2,286	100%	2,320	100%

*Statistical data are averages gathered from *Custody Division Daily Briefing Report*.

INMATE POPULATION OFFENDER AGE GROUPS

The 26-34 year old cohort was the most frequently represented age group within the jail population this quarter, followed by the 18-25 year old cohort.

COMBINED	October 2017		November 2017		December 2017		Quarterly Average	Quarterly %
	Age Group	Population	%	Population	%	Population		
18 to 25	4,340	25%	4,215	25%	4,119	24%	4,224	25%
26 to 34	5,661	33%	5,625	33%	5,591	33%	5,626	33%
35 to 39	2,379	14%	2,385	14%	2,328	14%	2,364	14%
40 to 44	1,524	9%	1,540	9%	1,503	9%	1,522	9%
45 & Older	3,421	20%	3,338	20%	3,278	19%	3,346	20%
Total	17,324	100%	17,102	100%	16,818	100%	17,082	100%

MALE	October 2017		November 2017		December 2017		Quarterly Average	Quarterly %
	Age Group	Population	%	Population	%	Population		
18 to 25	3,792	25%	3,666	25%	3,591	25%	3,683	25%
26 to 34	4,840	32%	4,791	32%	4,751	33%	4,794	32%
35 to 39	2,043	14%	2,076	14%	2,021	14%	2,047	14%
40 to 44	1,308	9%	1,339	9%	1,311	9%	1,319	9%
45 & Older	2,985	20%	2,913	20%	2,860	20%	2,920	20%
Total	14,969	100%	14,784	100%	14,532	100%	14,762	100%

FEMALE	October 2017		November 2017		December 2017		Quarterly Average	Quarterly %
	Age Group	Population	%	Population	%	Population		
18 to 25	548	23%	549	24%	528	23%	542	23%
26 to 34	821	35%	834	36%	841	37%	832	36%
35 to 39	335	14%	309	13%	308	13%	317	14%
40 to 44	215	9%	201	9%	192	8%	203	9%
45 & Older	435	18%	425	18%	418	18%	426	18%
Total	2,355	100%	2,318	100%	2,286	100%	2,320	100%

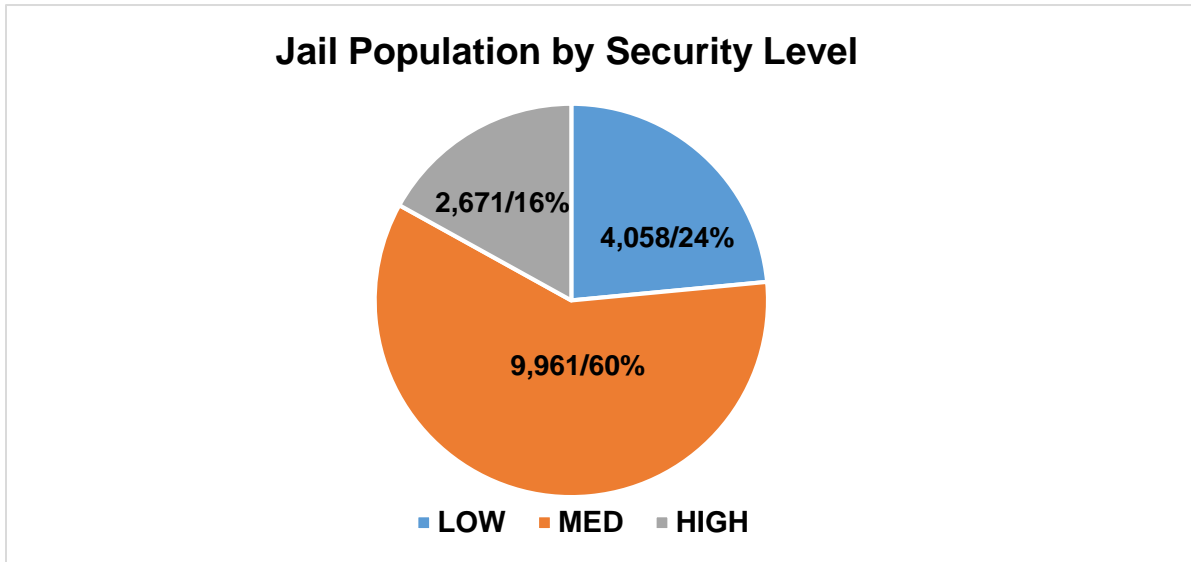
*Statistical data are averages gathered from *Custody Division Daily Briefing Report*.

CLASSIFICATION AND RE-CLASSIFICATION

LASD utilizes the Northpointe Classification system to assign security levels to inmates. The security levels guide where an inmate will be housed based on their individual risk for in-custody misconduct. Lower security housing areas offer more programming and privileges to better prepare the inmates for release. Higher security housing is more restricted and therefore limited in what programs are offered, due to potential risk of serious misconduct and/or escape by the high security level inmate population.

*Security Level Housing by Facility				
Month	Low	Medium	High	Total
October	4,144	10,060	2,710	16,914
November	4,084	9,916	2,717	16,717
December	3,945	9,908	2,587	16,440
Average	4,058	9,961	2,671	16,690
Percent	24%	60%	16%	100%

*K-10 (Ad-Seg) inmates are re-evaluated for reclassification of security level during the re-class process which occurs every 45 days.
 This chart only includes inmates housed in LASD Type II facilities. Does not include inmates housed in alternative custody beds.



Re-Classification Statistics

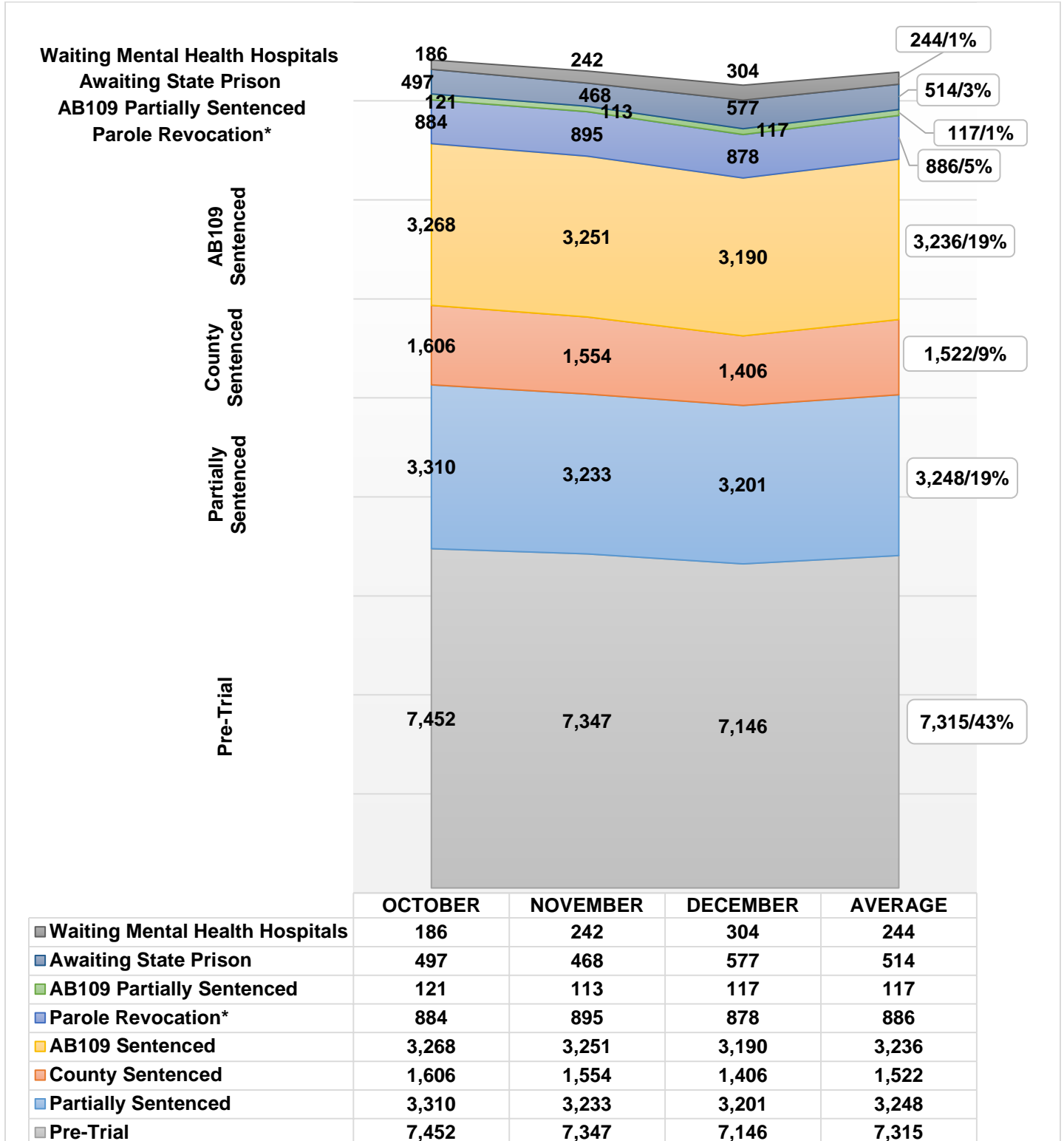
Inmates are periodically reclassified (approximately every 45 days) to determine if their security level is still appropriate or should be reduced or increased based upon their conduct.

	ADIP	Disciplinary	Inmate Request	Legal Status	Other	Periodic	Sentence	Staff	TOTALS	% of ADIP
OCTOBER	17,344	890	1	10	2	5,579	600	49	7,131	41%
NOVEMBER	17,092	781	0	13	2	5,418	897	38	7,149	42%
DECEMBER	16,820	835	0	25	6	4,838	945	45	6,694	40%
Total		2,506	1	48	10	15,835	2,442	132	20,974	
Average		835	0	16	3	5,278	814	44	6,991	

* The periodic assessment increased during the quarter due to an increase in personnel to conduct the assessments timely.

Inmate Population Breakdown

The inmate population consists of various categories of inmates in broad groupings, including: pre-trial, traditional county sentenced, AB 109 sentenced, AB109 sentenced with additional charges, parole/revocation violators, and those awaiting transfer to State Prison.



Parole Revocation includes PRCS Revocation 3455, Flash Incarceration 3454 and Inmates with a 3056 hold.

INMATE POPULATION BREAKDOWN CONTINUED

- **AWAITING STATE PRISON**
 - During this quarter, an average of 514 inmates were awaiting transfer to state prison, some while pending trial on other cases.

- **AB109 PAROLE AND PROBATION VIOLATORS**
 - An average of 886 AB109 inmates were in custody for violating their parole or probation.

- **AB109 SENTENCED**
 - An average of 3,236 inmates were in custody, sentenced under AB109.

- **TRADITIONAL COUNTY SENTENCED INMATE POPULATION**
 - The average daily count for the traditional county sentenced (TCS) population was 1,522 approximately 9% of the inmate population.

- **PRE-TRIAL INMATE POPULATION**
 - During this quarter, there were approximately 26,084 new bookings into the LA County Jail. Forty-three percent (43%) of the average daily inmate population (17,085) was comprised of inmates who were pre-trial. Pre-trial inmates are those who have an open case and have not been sentenced by the courts.

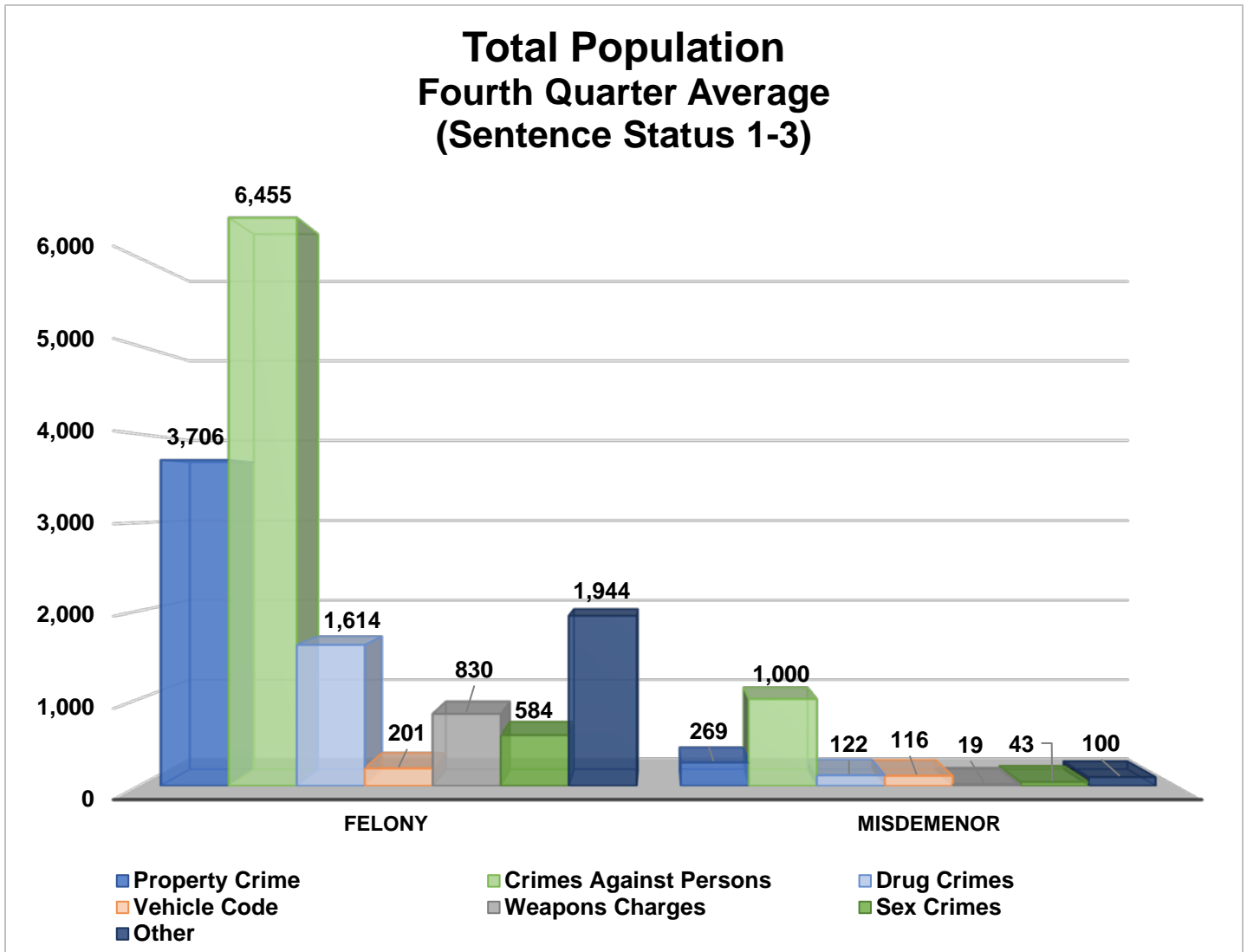
CRIME CLASSIFICATION STATISTICS

The chart below provides an average breakdown for the entire inmate population, both sentenced and un-sentenced, by arrest category.

Population (Sentence Status 1-3)

Arrest Category	Property Crime	Crimes Against Persons	Drug Crimes	Vehicle Code	Weapons Charges	Sex Crimes	Other	Total	Percentage of the Population
Felony	3,706	6,455	1,614	201	830	584	1,944	15,334	90%
Misdemeanor	269	1,000	122	116	19	43	100	1,669	10%
Total	3,975	7,455	1,736	317	849	627	2,044	17,003	100%

**Information contained is based on a snapshot of the daily inmate population purge every Tuesday.*



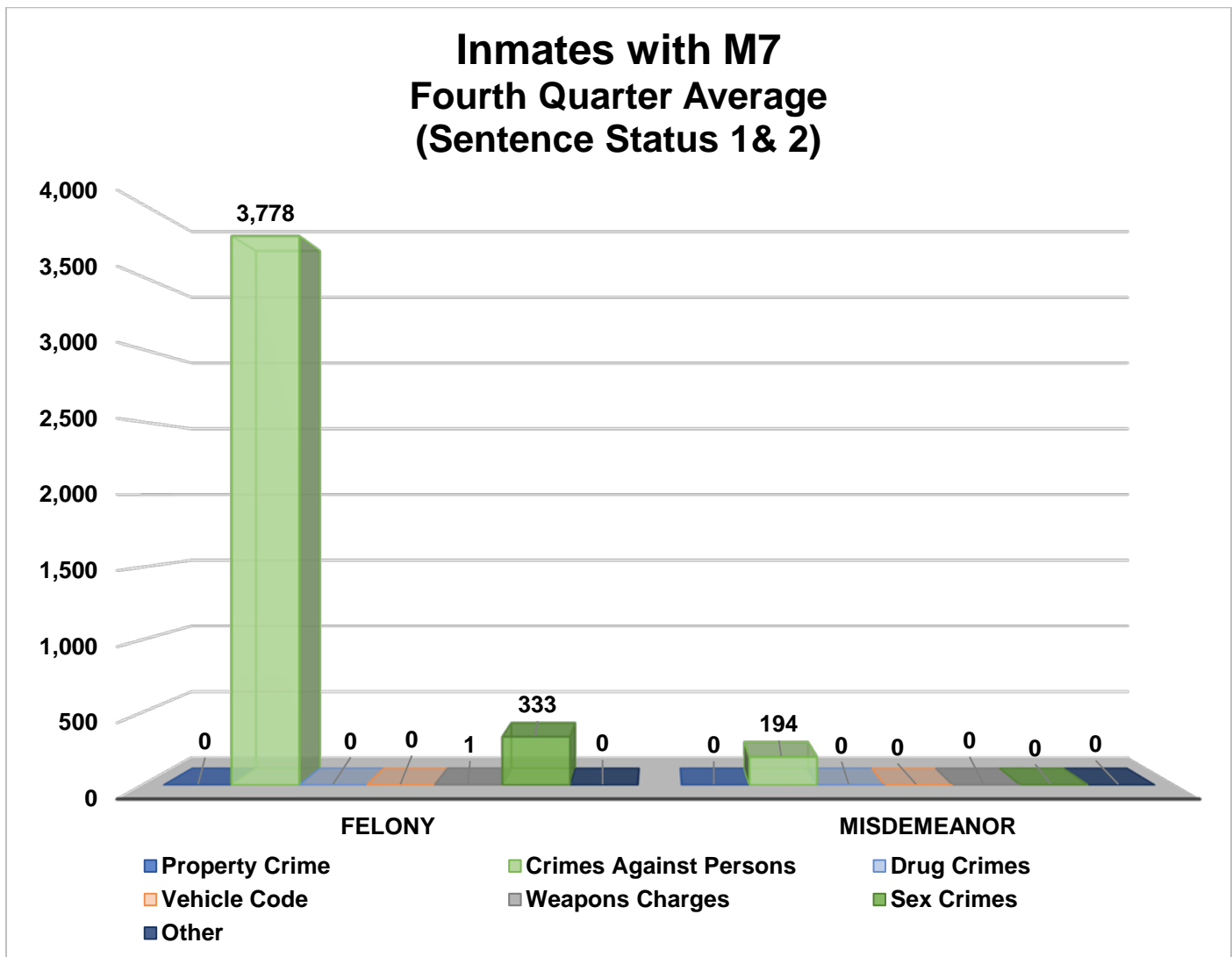
INMATES WITH ASSAULTIVE/VIOLENT CHARGES (M7)

The chart below provides a breakdown for the inmate population with M7 charges, sentence status one and two, by arrest category.

Inmates with Assaultive/Violent Charges (M7) (Sentence Status 1 & 2)

Arrest Category	Property Crime	Crimes Against Persons	Drug Crimes	Vehicle Code	Weapons Charges	Sex Crimes	Other	Total	Percentage of the pre-trial and partially sentenced population
Felony	0	3,778	0	0	1	333	0	4,112	95%
Misdemeanor	0	194	0	0	0	0	0	194	5%
Total	0	3,972	0	0	1	333	0	4,306	100%

* Information contained is based on a snapshot of the daily inmate population purge every Tuesday.

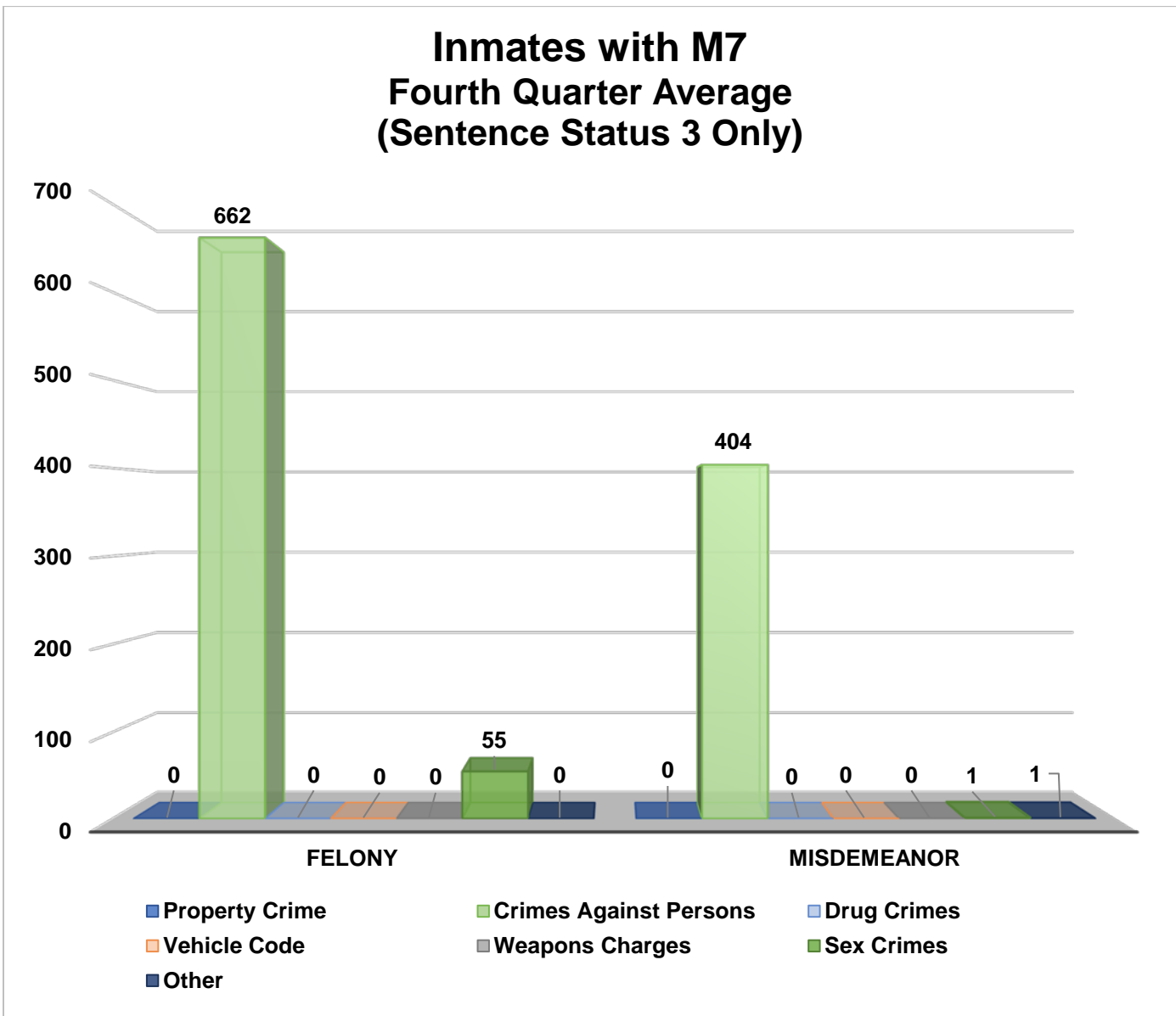


INMATES WITH ASSAULTIVE/VIOLENT CHARGES (M7) CONTINUES

Inmates with Assaultive/Violent Charges (M7) (Sentence Status 3 Only)

Arrest Category	Property Crime	Crimes Against Persons	Drug Crimes	Vehicle Code	Weapons Charges	Sex Crimes	Other	Total	Percentage of the sentenced population
Felony	0	662	0	0	0	55	0	717	64%
Misdemeanor	0	404	0	0	0	1	1	406	36%
Total	0	1,066	0	0	0	56	1	1,123	100%

* Information contained is based on a snapshot of the daily inmate population purge every Tuesday.



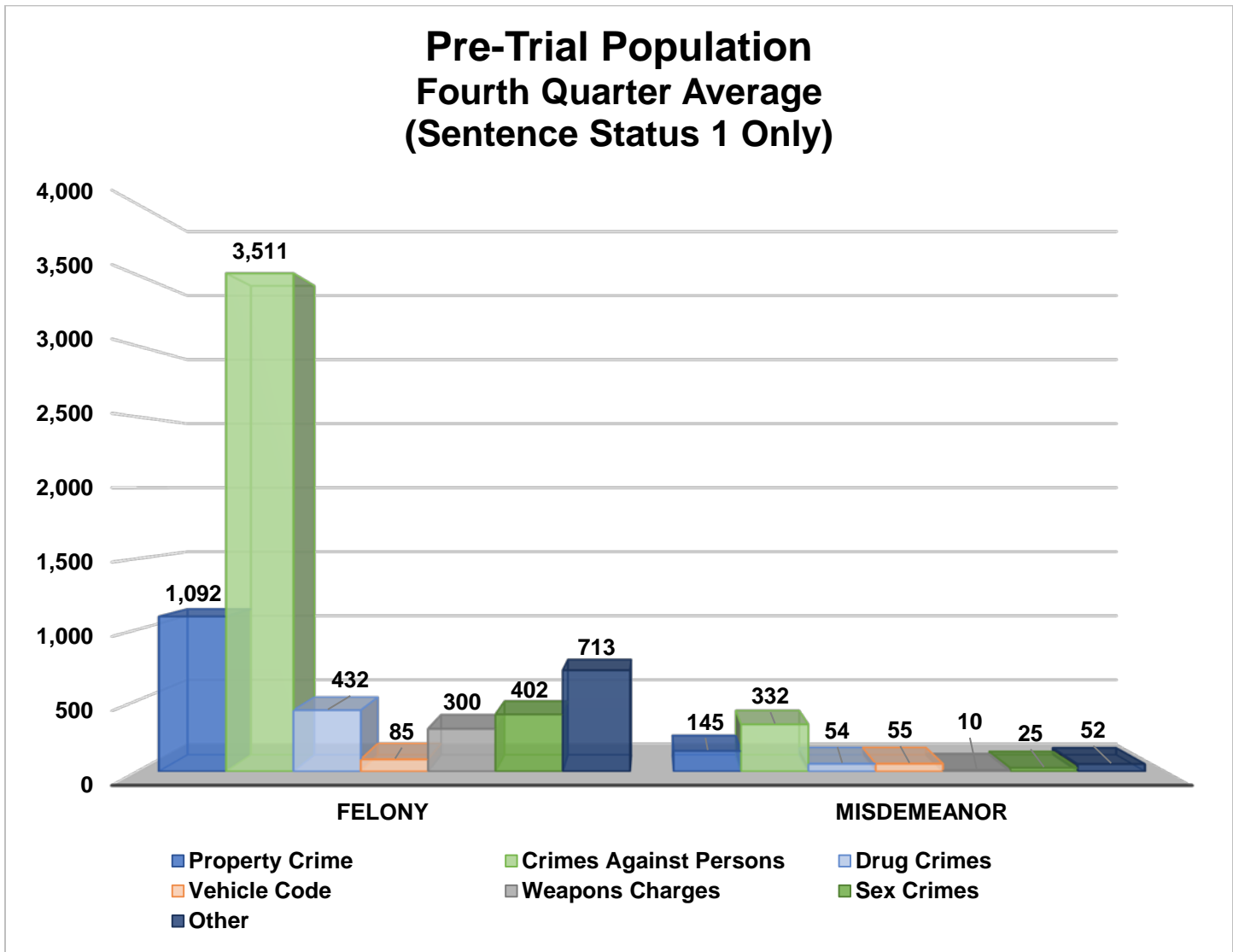
PRE – TRIAL POPULATION

The chart below provides a breakdown for the pre-trial inmate population who are awaiting court disposition.

Pre-trial Population (Sentence Status 1 only)

Arrest Category	Property Crime	Crimes Against Persons	Drug Crimes	Vehicle Code	Weapons Charges	Sex Crimes	Other	Total	Percentage of the pre-trial population
Felony	1,092	3,511	432	85	300	402	713	6,535	91%
Misdemeanor	145	332	54	55	10	25	52	673	9%
Total	1,237	3,843	486	140	310	427	765	7,208	100%

* Information contained is based on a snapshot of the daily inmate population purge every Tuesday.



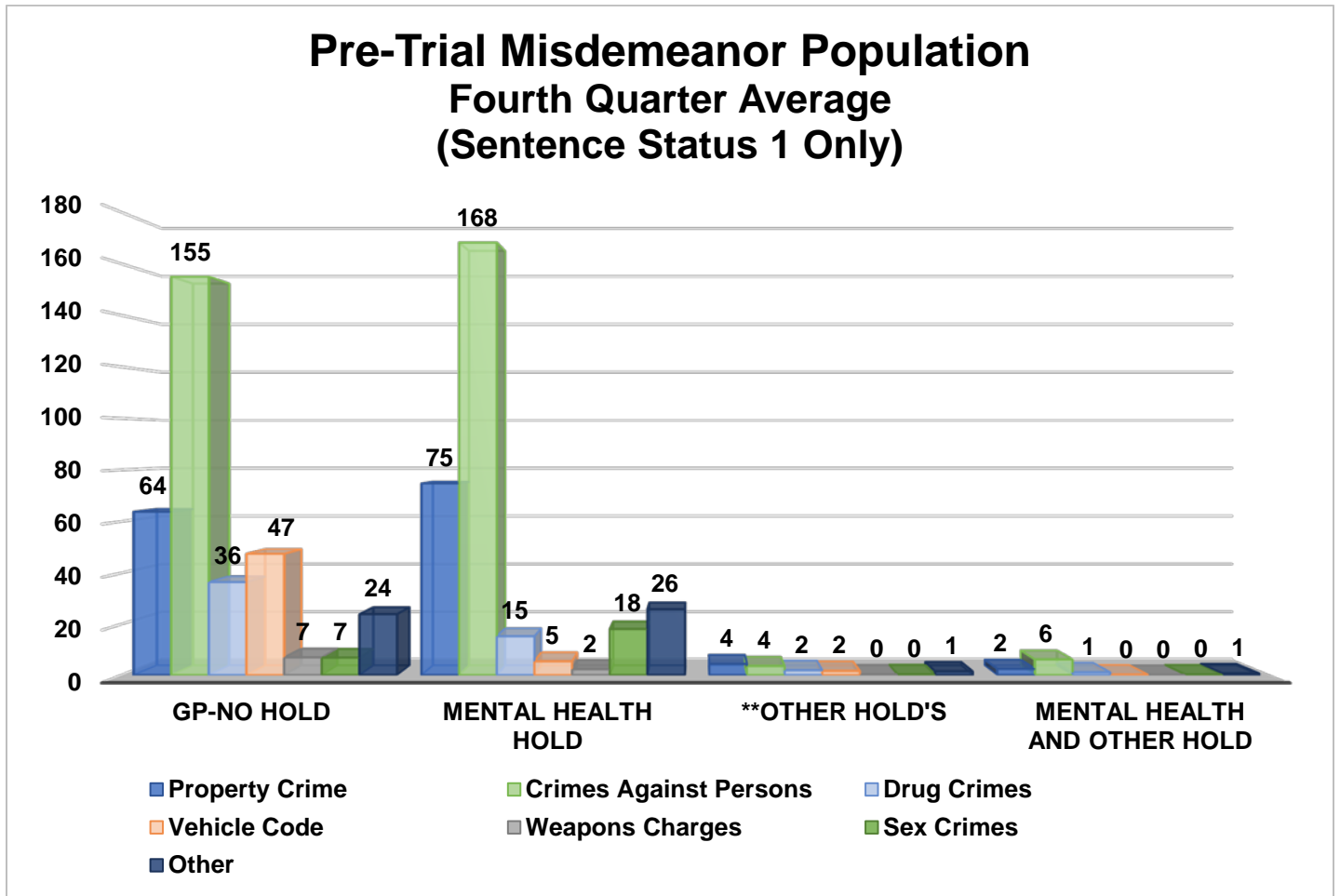
PRE – TRIAL MISDEMEANOR POPULATION

The chart below provides a breakdown for the pre-trial inmate population, incarcerated for a misdemeanor, who have not yet been convicted. “Holds” indicates the inmates are being held on a matter pending from an outside agency.

Pre-trial Misdemeanor Population (Sentence Status 1 only)

Arrest Category	Property Crime	Crimes Against Persons	Drug Crimes	Vehicle Code	Weapons Charges	Sex Crimes	Other	Total	Percentage of the pre-trial Population
GP No Hold	64	155	36	47	7	7	24	340	50%
Special Handle M with No Holds	75	168	15	5	2	18	26	319	46%
GP with Holds	4	4	2	2	0	0	1	13	2%
Special Handle M with Holds	2	6	1	0	0	0	1	10	2%
Total	145	333	54	54	9	25	52	672	100%

* Information contained is based on a snapshot of the daily inmate population purge every Tuesday.



PRE-TRIAL BAIL HOLDS

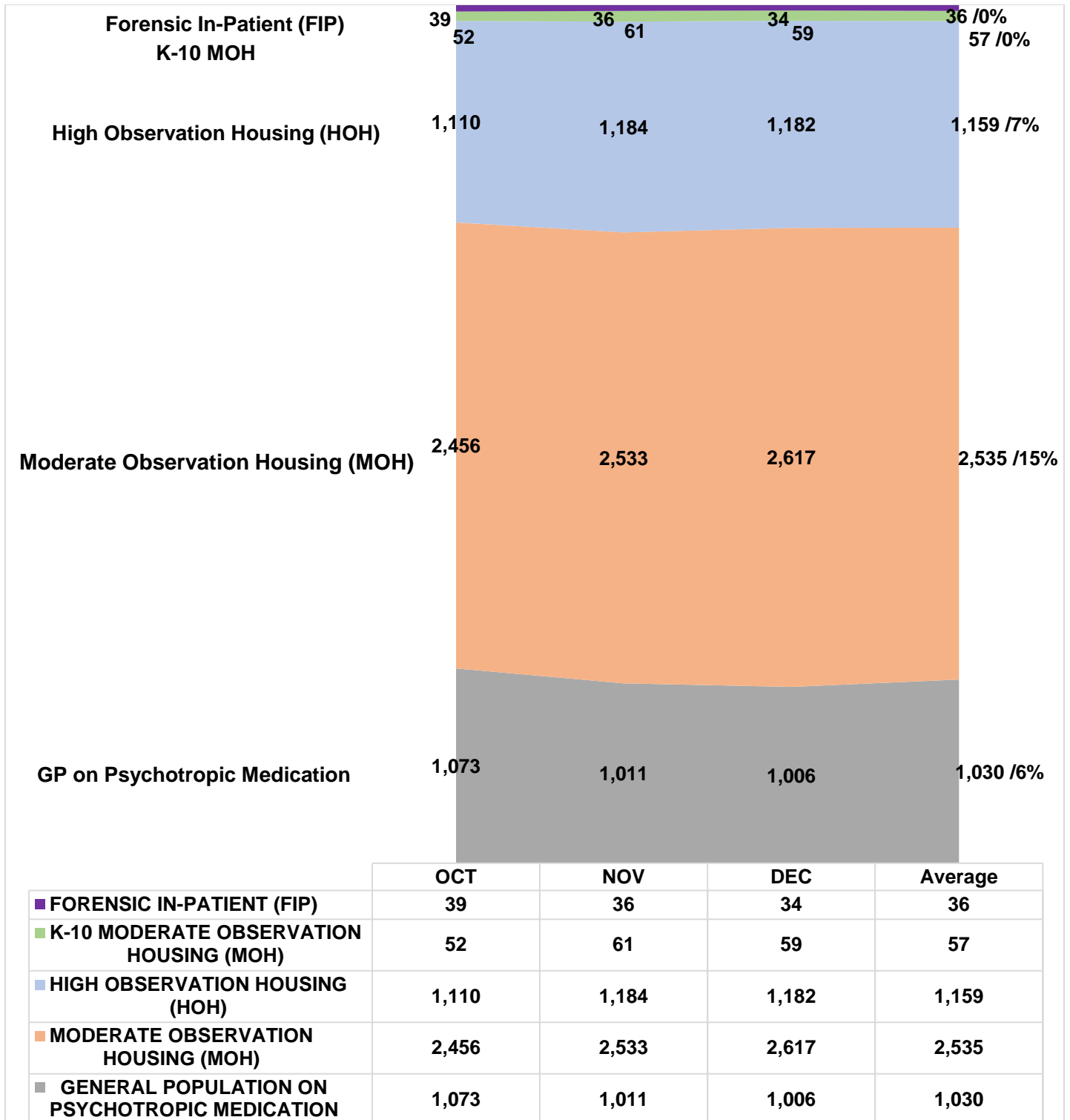
The numbers below represent the average number of inmates in LASD custody eligible for bail with the noted bail amounts.

Sentence Status 1	October			November			December			Fourth Quarter Average		
	With Hold	No Hold	Total	With Hold	No Hold	Total	With Hold	No Hold	Total	With Hold	No Hold	Total
\$1 - \$25,000	15	197	212	13	220	233	13	198	211	13	205	219
\$25,001 - \$26,000	2	34	36	2	31	33	4	34	38	3	33	36
\$26,001 - \$50,000	28	608	636	31	604	635	25	565	590	28	592	620
\$50,001 - \$100,000	38	849	887	33	812	845	31	778	809	34	813	847
\$100,001 - \$500,000	73	1,387	1,460	71	1,319	1,390	78	1,293	1,371	74	1,333	1,407
\$500,001 - \$1 Million	60	1,365	1,425	54	1,405	1,459	56	1,419	1,475	57	1,396	1,452
No Bail	409	2,335	2,744	387	2,300	2,687	377	2,216	2,593	391	2,284	2,675
Total	625	6,775	7,400	591	6,691	7,282	584	6,503	7,087	600	6,656	7,256

**This information is derived from a point-in-time snapshot. Limitations with our data systems and limitations in obtaining timely court information may result in inaccuracies.*

MENTAL HEALTH INMATE POPULATION

This quarter the overall inmate population was 17,085; the mental health population accounted for 28 percent of this population. Currently, inmates identified with Mental Health needs requiring specialized housing moderate or high observation housing, account for 22 percent of the overall population. This remaining 6 percent have been treated and continue to receive psychotropic medication while housed in general population.



MISDEMEANOR INCOMPETENT TO STAND TRIAL (MIST)

The Los Angeles County Jail houses inmates who are awaiting trial for misdemeanor charges who have been found to be incompetent to stand trial. This quarter the average number of inmates on MIST is 234.

Misdemeanor Incompetent to Stand Trial (MIST)									
October			November			December			Quarterly Average
Male	Female	Total	Male	Female	Total	Male	Female	Total	
134	88	222	151	85	236	169	76	245	234

AMERICANS WITH DISABILITIES ACT (ADA)

ADA Housing is used to accommodate inmates with mobility limitations and/or physical disabilities. This quarter the average number of inmates requiring ADA is 349 which is slightly higher than last quarter's (319) total.

Americans With Disabilities Act (ADA)				
Housing Area	October	November	December	Quarterly Average
Twin Towers Module 232	354	351	342	349

MEDICAL HOUSING

Medical Outpatient/Specialty Housing (MOSH) is provided to inmates who require a level of medical treatment beyond that of stabilized medication distribution (pill call). The MOSH area in MCJ is also used to house inmates with mobility issues.

Additional Medical Housing – Not ADA Designated				
Housing Area	October	November	December	Quarterly Average
Correctional Treatment Center (CTC)	105	110	113	109
Los Angeles County Medical Center (LCMC)	20	18	19	19
*MCJ Medical/Clinic	366	352	345	354
Monthly Total	491	480	477	482

**Includes some ADA housing.*

IN-CUSTODY PROGRAMS

LA COUNTY INMATE IN-CUSTODY PROGRAMS

The Los Angeles County Jail offers several in-custody programs. Programs vary from a number of in-custody work assignments, vocational job training, education, and life skill classes, as well as fire camp training and California Department of California Rehabilitative fire camp placement for AB109 inmates. Various programs award sentenced inmate additional time credits for their participation pursuant to the California Penal Code:

CREDIT EARNINGS

Program	Penal Code	Credit Earned	Type of Inmate
Sentenced GT/WT	4019 PC	Day-for-Day (1:1)	All Sentenced Inmates
Conservation	4019.1 PC	One and one half-for One (1.5:1)	All Sentenced Inmates
Fire Camp	4019.2 PC	Two-for-One (2:1)	AB109 Sentenced Inmates
Milestone	4019.4 PC	Up to 6 weeks per year	AB109 Sentenced Inmates

CONSERVATION WORK PROGRAM (CWP)

The Conservation Work Program (CWP) requires inmates to complete their adjusted sentence while working in various job classifications, giving them the skills and work discipline necessary to increase their chances of success once released. Effective January 2015, all sentenced offenders, including Traditional County Sentenced (TCS) inmates are eligible to receive credits pursuant to Penal Code Section 4019.1. For this quarter, approximately 2,982 offenders (17% of the population) participated in CWP.

CONSERVATION WORK PROGRAM (CWP)				
Inmate Type	October	November	December	Quarterly Average
Inmates Participated In Programs	3,039	3,047	2,859	2,982

FIRE CAMP TRAINING PROGRAM

Fire Camp Training and California Institute for Women (CIW/CSCR) training are aligned under the Conservation Work Program (CWP). This program is the first step of training before an inmate may participate in a State facilitated Fire Camp Program. Offenders who are sentenced under AB109 are eligible to receive credits pursuant to Penal Code 4019.1. The average number of inmates enrolled in the Fire Camp training program for this quarter was 73.

FIRE CAMP TRAINING CAMP				
Housing Type	October	November	December	Quarterly Average
PDC Fire Camp Training (Men)	73	69	70	71
CIW Fire Camp Training (Women)	1	3	3	2
Monthly Totals	74	72	73	73

CALIFORNIA DEPARTMENT OF CORRECTIONS AND REHABILITATION (CDCR) FIRE CAMP PROGRAM

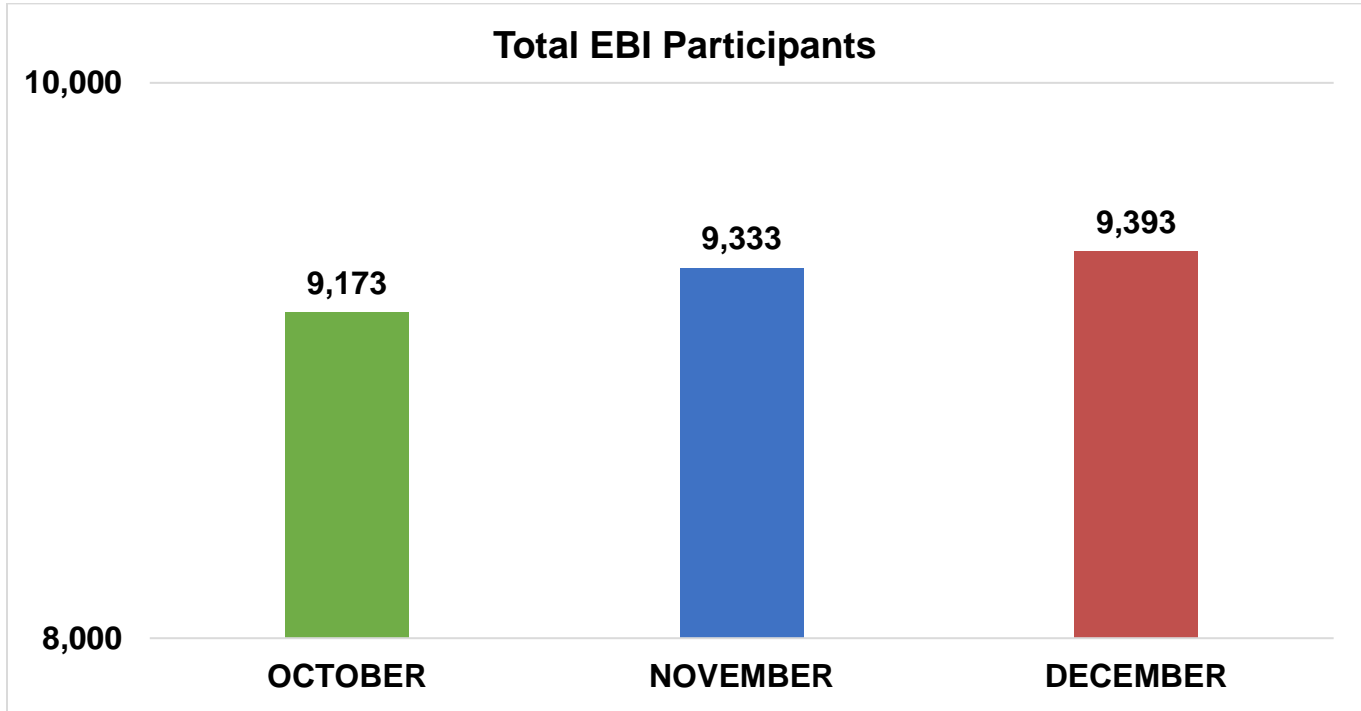
Once an inmate passes all necessary requirements in the Fire Camp Training Program located at PDC East facility, they are transferred to one of five state contracted fire camp sites where they will serve the remainder of their adjusted sentence. Offenders who are sentenced under AB109 are eligible to receive credits pursuant to Penal Code 4019.2. The average number of inmates assigned to CDCR Fire Camps for this quarter was 80.

CDCR FIRE CAMP				
Fire Camp Locations	October	November	December	Quarterly Average
Acton Fire Camp	15	12	13	13
Francisquito Fire Camp	9	10	14	11
Holton Fire Camp	38	49	33	40
Julius Klein Fire Camp	9	11	13	11
Malibu Women's Fire Camp	6	5	5	5
Monthly Totals	77	87	78	80

EDUCATION BASED INCARCERATION PROGRAMS (EBI-MILESTONE)

The Education Based Incarceration Program (EBI) uses traditional and nontraditional education which is designed to reduce incarceration by increasing the educational, civic, social, economic, and life skills of its participants. Offenders who are sentenced are eligible to receive credits pursuant to Penal Code 4019.4. For this quarter, approximately averaged 9,300 (54% of the population) inmates participated in the EBI program.

A total of 731 Milestone credits were awarded this quarter.



Education Based Incarceration Program (EBI)				
Inmate Type	October	November	December	Quarterly Average
*Inmates Participated in EBI	9,173	9,333	9,393	9,300
*Sub Population of EBI Participants				
EBI Participant Type	October	November	December	Quarterly Average
GP on Psych Meds	929	902	948	926
Mentally III (M)	1,674	2,257	2,673	2,201
^Pre-Trial Non – AB109	2,499	3,255	4,416	3,390
Post Trial Non – AB109	4,606	4,012	3,085	3,901
^Pre-Trial – AB109	36	49	57	47
Post Trial – AB109	2,007	1,993	1,812	1,937
^Unsentenced Status 1 and 2	25	24	23	24

**Data derived from ATAR system, sub-population numbers will differ from monthly total due to duplicate classifications.*

^NON-CREDIT EARNING CATEGORIES OF PARTICIPANTS IN EBI (IN EBI DORM WORKING YET NOT EARNING CREDIT DUE TO SENTENCE STATUS).

BACK ON TRACK PROGRAM

The Back on Track (BOT) program began in February 2015 and is overseen by EBI staff. The program delivers education and comprehensive reentry services to offenders before and after a participant is released from jail. The program focuses on the critical time following an inmate's release from jail, by providing the seamless reentry services vital for success, including employment and life skill services. This program is available to inmates who have been sentenced under AB109 and are eligible to receive Milestone credits. They must be enrolled in the program for 18 months—divided into 9 months in-custody and 9 months out-of-custody.

Back On Track	October	November	December	Quarterly Average
South Barrack	65	59	57	60

In-Custody S.T.A.R.T

The jail based START treatment services began at CRDF in February 2016 providing substance use disorder (SUD) treatment services to 50 women on any given day. In May of 2017, the program expanded to treat up to 124 women. In May 2017 services began at MCJ for up to 90 gay and transgender inmates and at PDC South facility treating up to 200 men in general population on any given day. Treatment services include screening, clinical assessment, group and individual counseling, case management services, medication assisted treatment, re-entry planning and care coordination with CTU and transportation to community based services post release.

In-Custody S.T.A.R.T (CRDF)	October	November	December	Quarterly Average
Enrolled	130	108	123	120
Completed	33	37	48	39

In-Custody S.T.A.R.T (MCJ)	October	November	December	Quarterly Average
Enrolled	34	42	58	45
Completed	2	5	12	6

In-Custody S.T.A.R.T (PDC)	October	November	December	Quarterly Average
Enrolled	111	137	101	116
Completed	36	27	12	25

ALTERNATIVES TO CUSTODY PROGRAMS

ALTERNATIVES TO CUSTODY PROGRAMS

The Community Transition Unit (CTU), the Community Based Alternatives to Custody Unit (CBAC), and the Compliance Team work together by utilizing a variety of alternatives to custody programming options in an effort to enhance an inmate's chance of success upon release. These programs are conducted in collaboration with local agencies including Community and Faith Based Organizations, Department of Mental Health (DMH), Department of Public Health (DPH), and other organizations. It is the Department's goal to program inmates from intake through re-entry into the community. With this approach, we hope to increase public safety and reduce the rate of recidivism.

Supported by release planning overseen by the CTU, and in partnership with contracted services, inmates are provided re-entry assistance through linkages to services that are initiated while they are in-custody and continue upon release. Through the Alternatives to Custody (ATC) programs, qualifying inmates are afforded the opportunity to complete the remaining portion of their sentence in a community treatment program. Inmates who do not qualify for ATC due to security or other reasons are referred to community providers for re-entry assistance.

The ATC programs include:

Substance Treatment and Reentry Transition (S.T.A.R.T)

The Substance Treatment and Re-entry Transition (START) program is a Department Public Health, Substance Abuse Prevention Control (SAPC) funded program that places eligible male and female inmates into residential substance use disorder (SUD) treatment programs on electronic GPS monitoring as an alternative to custody (ATC) program.

Community Grant Beds

The Community Grant beds are funded through community grants. They work directly with various residential programs approved by LASD, but not affiliated with the START program, and they offer treatment beds for inmates under the ATC program. Several programs cater to specific clientele who fit a specified demographic in regards to age and gender.

Veteran's Administration (VA)

The Veteran's Administration (VA) funds SUD residential treatment, under the ATC program for inmates who are confirmed to be a veteran entitled to VA Benefits. The treatment programs are approved by the VA and are vetted by LASD.

Transitional Case Management Program (TCM)

The Transitional Case Management Program (TCM) is a Department of Public Health (DPH) funded program, whereby DPH employees refer HIV infected inmates to a residential SUD treatment facility, approved and vetted by LASD, under the ATC program.

TARZANA TREATMENT CENTER DMH/SUD PROGRAM

Tarzana Treatment Center, in partnership with LASD, DHS Correctional Health, and the Department of Mental Health, has made available 40 total beds for inmates with a co-occurring mild to moderate mental health diagnosis, and a substance use disorder (SUD). These residential SUD beds are for female. Inmates are identified by DHS Jail Linkage staff and referred to Tarzana treatment for assessment and acceptance. Inmates must still qualify for ATC programming through a validated risk assessment and criminal history review.

MENTAL HEALTH DIVERSION – NORMANDIE VILLAGE/GATEWAY

Normandie Village treats eligible male N3 inmates with mental illness who are a low security risk, and in a stabilized condition. They are selected to complete the remaining 60-180 days of their sentence in a 42 bed community-based IMD Step-down facility.

For acceptance into program, inmates must volunteer to participate in services and meet the following criteria:

1. Be 18-54 years of age
2. Must have a primary Axis I major psychiatric diagnosis
3. May have a secondary Axis I diagnosis of substance abuse
4. Must not be a registered sex offender
5. Must not have a fire setting history
6. Must be ambulatory
7. Must not have a serious or life-threatening medical problem
8. Must not require treatment in a locked setting
9. Must have applied for SSI

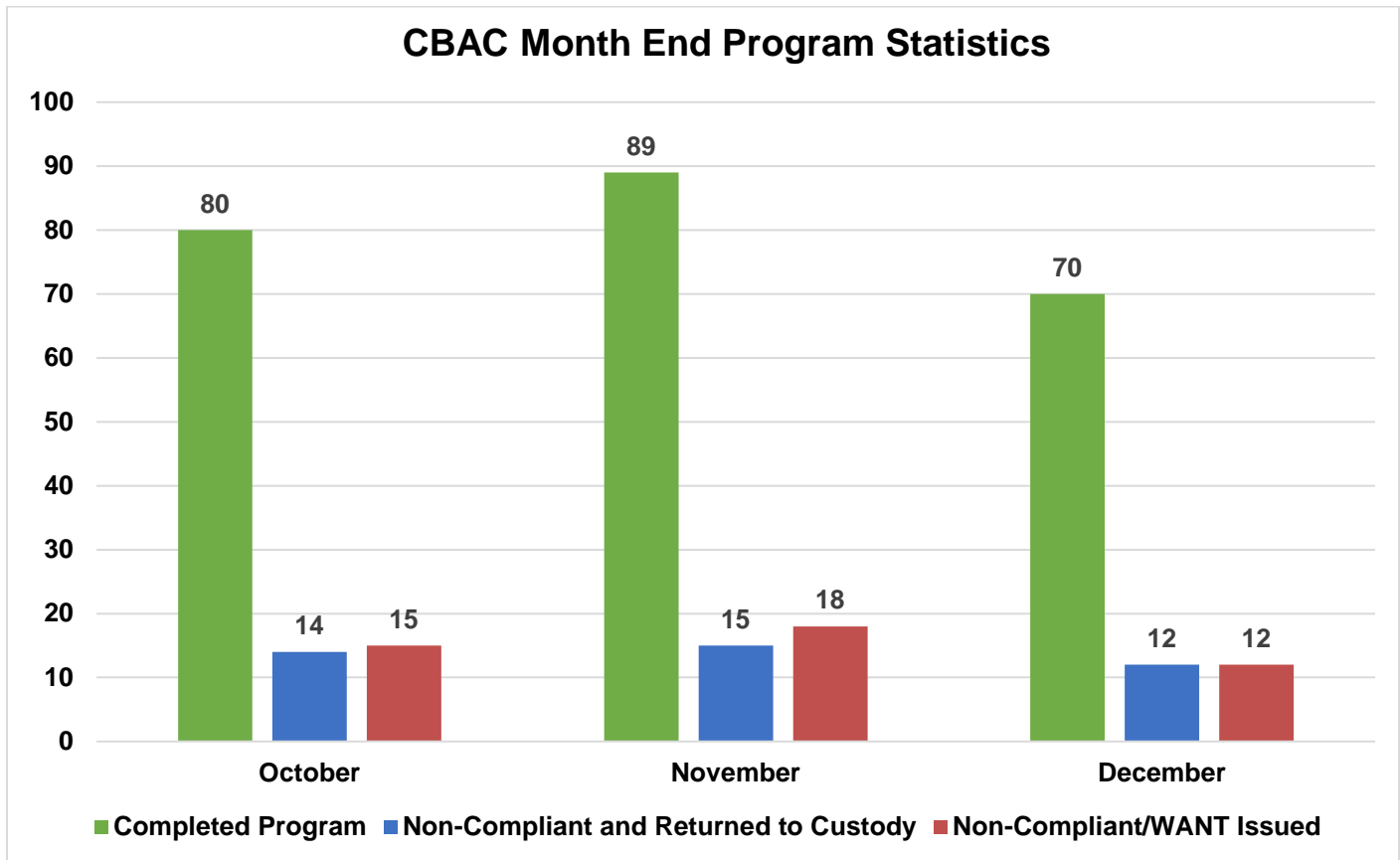
Program Quarterly Statistics	Enrolled	Completed	Returned to Custody	Absconded
START	36	49	5	1
Community Grant Beds	1	2	0	0
Veterans	1	0	1	0
Transitional Case Management	1	0	0	0
Tarzana TC DMH/SUD	2	1	0	0
Normandie Village DMH	4	3	2	1

COMMUNITY BASED ALTERNATIVES TO CUSTODY (CBAC)

The PMB's CBAC unit identifies low risk sentenced offenders within the jail population who qualify to finish their remaining sentence in and out-of-custody alternative environment. Although these individuals are outside of traditional custody, they are still under the jurisdiction of the Department.

CBAC Monthly Placement									
Program	October			November			December		
	M	F	Total	M	F	Total	M	F	Total
Electronic Monitoring Program	41	4	45	27	9	36	29	6	35
Weekender Work Program	32	0	32	14	0	14	18	0	18
Work Release Program	37	8	45	33	7	40	38	3	41
Monthly Totals	110	12	122	74	16	90	85	9	94

The graph below depicts the total number of offenders who successfully completed the remainder of their sentence on a CBAC program. It also shows the number of offenders who failed to complete the program and with the efforts of the PMB Compliance Unit, were returned back to finish their sentence and those who failed to complete the program and were not returned back to custody.



RE - ENTRY ASSISTANCE

AFFORDABLE CARE ACT (ACA)

Medi-Cal application assistance is offered to inmates at each jail facility and those inmates on the Work Release Program (WRP), home EMP, community treatment ATC and station workers. The following chart represents enrollment statistics for the fourth quarter of 2017:

	October	November	December	Totals	Average	Prev. Quarter Totals	% Difference
Direct inmate contact/In-Reach	707	628	662	1,997	666	2,199	-9%
Applications cleared by DPSS	104	83	47	234	78	416	-44%
Applications in queue	109	118	217	444	148	721	-38%
Applications approved by DPSS	104	83	47	234	78	416	-44%
Benefits received	104	83	47	234	78	416	-44%
Benefits denied	27	17	17	61	20	200	-69%

DPSS' YOUR BENEFITS NOW SYSTEM IN THE PREVIOUS QUARTER WAS NOT CAPTURING THE DATA NEEDED FOR THESE STATS DUE TO A NEWLY IMPLEMENTED SYSTEM (LRS). THE SYSTEM IS WORKING NOW BUT THE PREVIOUS QUARTER'S TOTALS WEREN'T AVAILABLE TO DO A COMPARISON FOR THIS REPORT.

COMMUNITY RE-ENTRY AND RESOURCE CENTER (CRRC)

The information below are recently released inmates and inquiries and/or contacts made by members of the general public who have been assisted with services at the CRRC for the fourth quarter of 2017.

Inquiry Demographic Population	October	November	December	Total	Average
General Release	354	345	345	1,044	348
General Public	144	127	126	397	132
Alternative to Custody Program	2	4	2	8	3
Coordinated Release	7	4	16	27	9
Work Release	21	17	7	45	15
Phone Referral	4	2	1	7	2
Monthly Totals:	532	499	497	1,528	509

Inquiry Demographic Gender	October	November	December	Total	Average
Male	441	429	415	1,285	428
Female	113	97	100	310	103
Monthly Totals:	554	526	515	1,595	531

CTU personnel visit the Inmate Reception Center release area to educate and remind inmates waiting to go home about services available at the CRRC. Walks of the release area are performed every 90 minutes.

	October	November	December	Total	Average
Number of 90 Minute Contact Walks	45	62	45	152	51
Number of Inmates Contacted	1,436	1,587	1,265	4,288	1,429
Number of Flyers Distributed	995	1,037	1,189	3,221	1,074

CTU COORDINATED RELEASES TO VARIOUS PROGRAMS

The final 90 days leading to an inmate's release from custody are the most critical in ensuring a successful transition from Custody to Community Based Organization (CBO) Treatment Centers. During the time leading up to their release, inmates are interviewed several times by the CBO Staff and members of the Community Transition Unit to ensure that they are matched up with a suitable treatment provider.

The coordinated release process helps to create a trust between law enforcement, inmate participants, and CBO's. The CTU's ultimate goal is to provide a successful recovery and re-entry into the community and to ultimately decrease recidivism.

	October	November	December	Total	Average
Coordinated Release	119	88	87	294	98

CTU VITAL RECORDS

Through the Vital Records Program, LASD staff members have been deputized by the County Registrar-Recorder to facilitate birth certificate applications for inmates born in Los Angeles County, who have requested a certified copy. The fee of \$28 for certified copies of birth certificates is funded by the Inmate Welfare Fund.

All inmates in custody are eligible to apply for a California ID Card. The issued ID's are provided to the inmates upon their release. The inmates must still report to the DMV to obtain a driver license following their release.

Records Processed	October	November	December	Quarterly Total	Average
DMV - California Identification Card	104	131	120	355	118
RECORDS – Birth Certificate	103	167	140	410	137
Totals	207	298	260	765	255

Records Issued	October	November	December	Quarterly Total	Average
DMV - California Identification Card	140	41	52	233	78
RECORDS – Birth Certificate	191	112	160	463	154
Totals	331	153	212	696	232